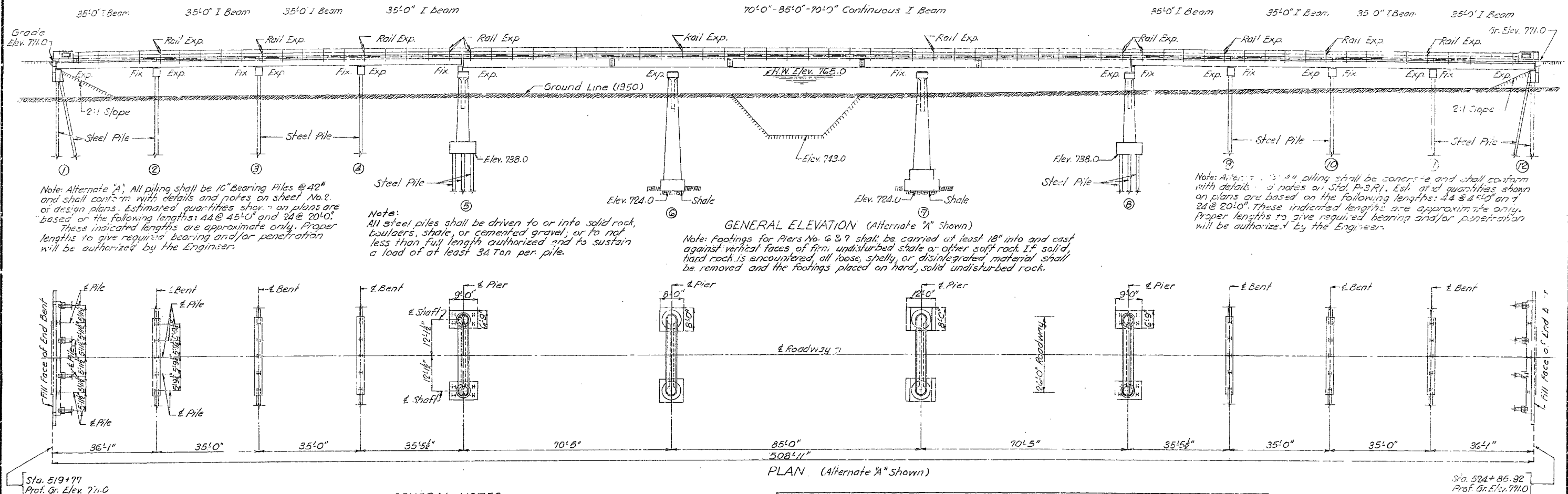


# MISSOURI STATE HIGHWAY DEPARTMENT

FED. ROAD DIST. NO.	STATE	FED. AID PROJ. NO.	FISCAL YEAR	SHEET NO.	TOTAL SHEETS
5	MO.		19		



## GENERAL NOTES:

Design Specifications: A.A.S.H.O. - 1944  
 Loading H20-44.  
 Structural Steel Stress 18,000/lb.  
 Reinforcing Steel Stress 18,000/lb.  
 Concrete Class "B" Stress 1,000/lb.  
 All concrete shall be Class "B".  
 Shop Rivets  $\frac{3}{4}$ " holes  $\frac{1}{8}$ " except where otherwise noted.  
 Field connections shall be bolted. All bolts shall be high tensile steel bolts with carburized washers, except for the  $\frac{5}{8}$ " bolts specified in handrail details. See Special Provisions.  
 Field bolts to be  $\frac{3}{4}$ " except as otherwise noted.

For requirements on welding electrodes see Special Provisions. Qualification of welding operators will be required.  
 Paint: Shop, none; Field, contact surfaces of bolted rail connections one coat of red lead and surfaces inaccessible after erection three coats of red lead. No other paint to be applied by Contractor. Red lead required shall be furnished by Contractor. Payment for cleaning and painting such surfaces will be included in unit price bid for fabricated structural steel.  
 Where joint filler is specified on the plans, it shall conform with the requirements for Gray Rubber Compound Joints as given in Section 38-13 B(2) of the Standard Specifications.  
 A rubbed surface finish will be required on all exposed surfaces of concrete and posts above top of curbs.  
 Surfaces of steel piles at Bents No. 1 & 12 from bottom of concrete cap to 3'0" below present ground line shall be painted with one coat of an approved brand of emulsified asphalt paint. Payment for excavating around piles below present ground line and backfilling same, furnishing emulsified asphalt paint, and cleaning and painting steel surfaces specified will be included in the unit price bid for other items.

## ESTIMATED QUANTITIES

Item	Alternate "A"			Alternate "B"		
	Substr.	Superstr.	Total	Substr.	Superstr.	Total
Class 1 Excavation for Structures Cu.Yds.	660		660	660		660
Class 2 Excavation for Structures Cu.Yds.	567		567	567		567
Class "B" Concrete Cu.Yds.	383.6	349.4	733.0	378.0	349.4	727.4
Fabricated Structural Steel Lbs.	4720	379,820	384,540		379,820	379,820
Steel Castings Lbs.		5220	5220		5220	5220
Gray Iron Alloy Castings Lbs.		3430	3430		3430	3430
Reinforcing Steel Lbs.	24,180	83,450	107,630	22,610	83,450	106,060
Steel Pile in place (Alt. "A") Lin. Ft.	2256		2256			
Steel Pile Cut offs (Alt. "A") Lin. Ft.	204		204			
Concrete Pile in place (Alt. "B") Lin. Ft.				2256		2256
Concrete Pile Cut offs (Alt. "B") Lin. Ft.				204		204

Note: Excavation for bridge made above Elev. 745.0 will be paid for as Class 1 Excavation for Structures.  
 Excavation for bridge made below Elev. 745.0 will be paid for as Class 2 Excavation for Structures.  
 The concrete in end posts is included in Superstructure concrete.

B.M. Elev. 759.90 Nail & Washer in N. Roof of Contr. wood 34' Pt. Sta. 519+42. (U.S.G.S. Datum)

**BRIDGE OVER CHARITON RIVER**  
 STATE ROAD FROM NOVINGER NORTHEAST  
 ABOUT 7 MILES N.W. OF KIRKSVILLE  
 PROJECT NO. RT-3-SEC. 1-A STA. 519+77

ADAIR

COUNTY

FINISHED

SUBMITTED BY J.A. Wellham DATE 1/21/53  
 APPROVED BY Rex M. Whitton DATE 1/21/1953

STD. R3/R1  
 STD. C-110 R3  
 L-534

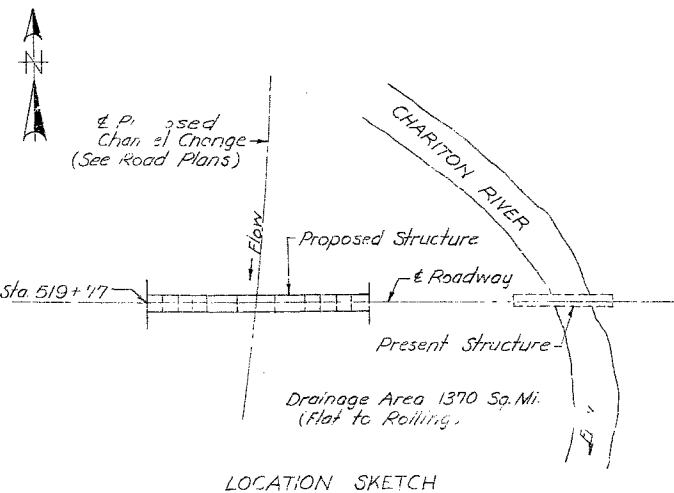
FINISHED

Sheet No. 1 of 9.

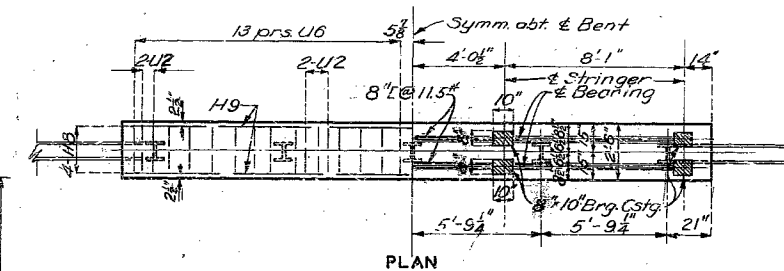
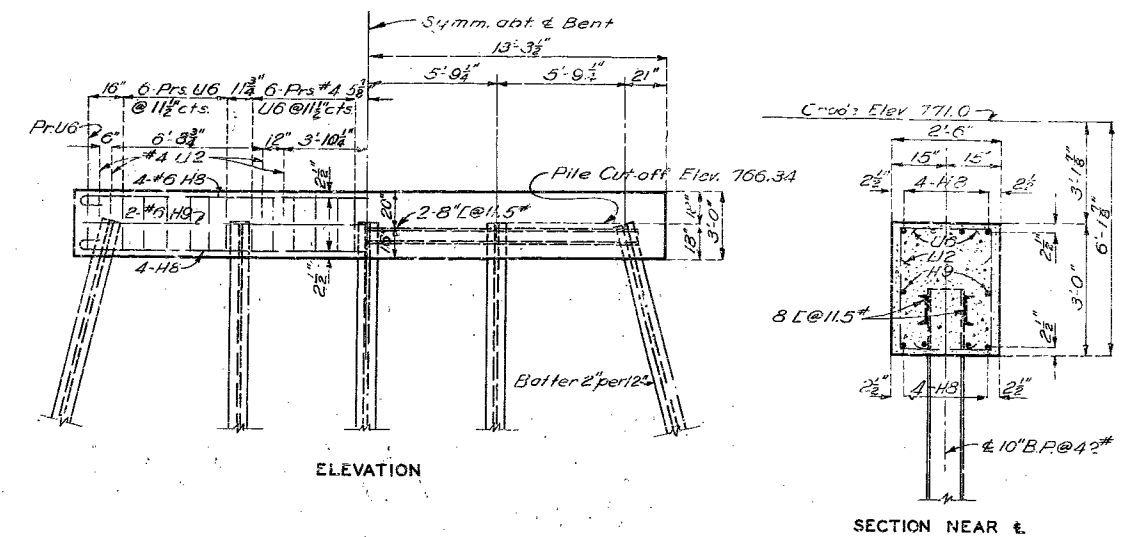
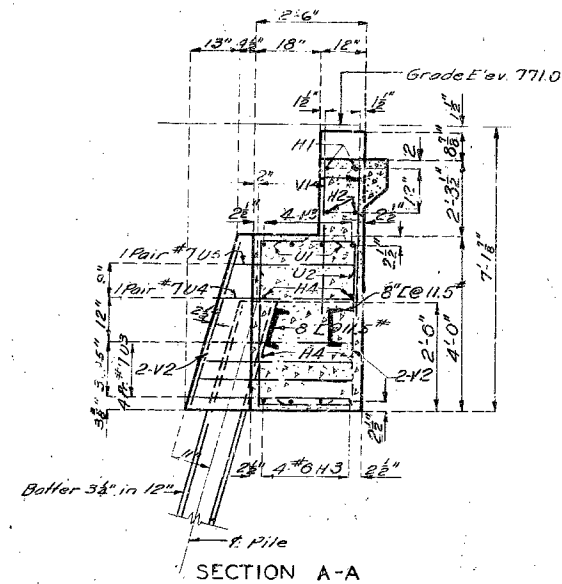
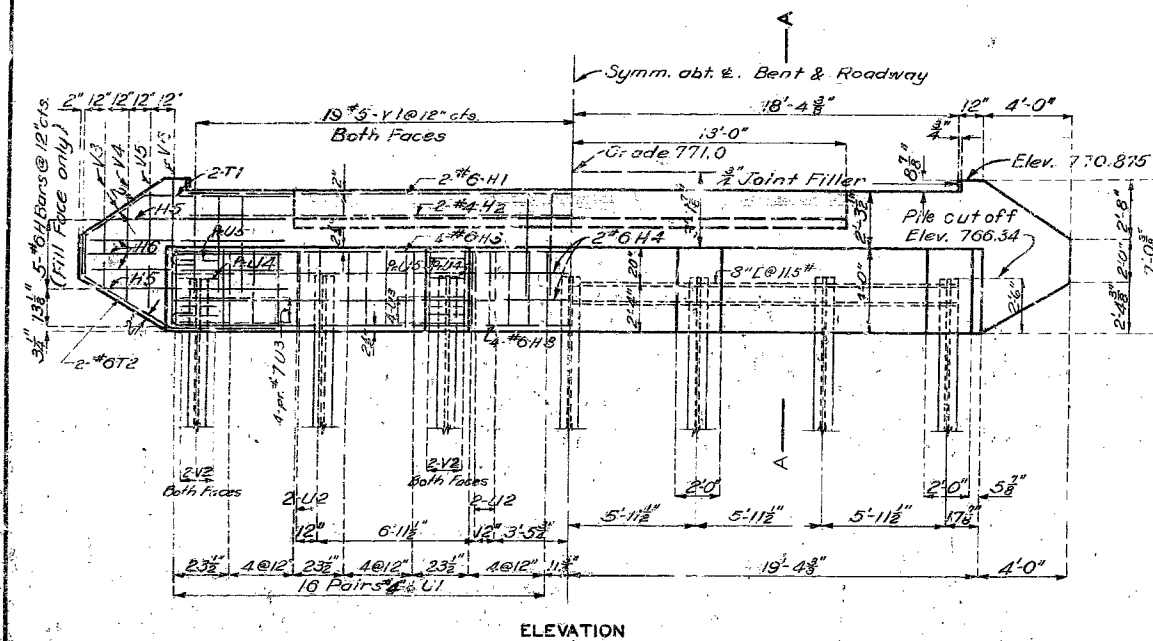
SEE FINAL PLANS BROWN-LINES

Drawn Nov. 1952 by M.E.L.  
 Checked Jan. 1953 by C.S.A.

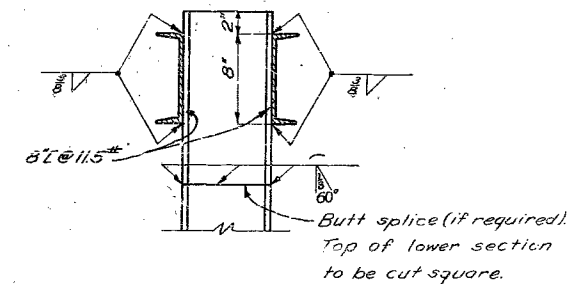
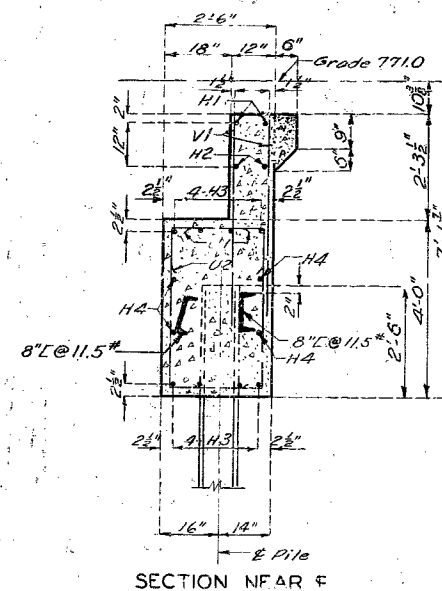
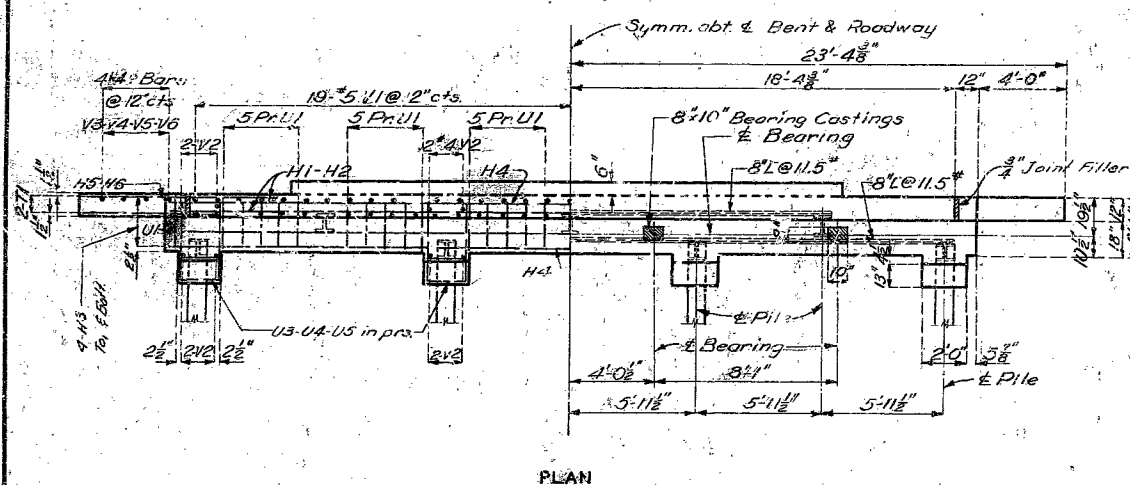
Note: This drawing is not to scale. Follow dimensions.



FED ROAD DIST NO.	STATE	FED AID PROJ NO.	FISCAL YEAR	SHEET NO.	TOTAL SHEET
5	MO				



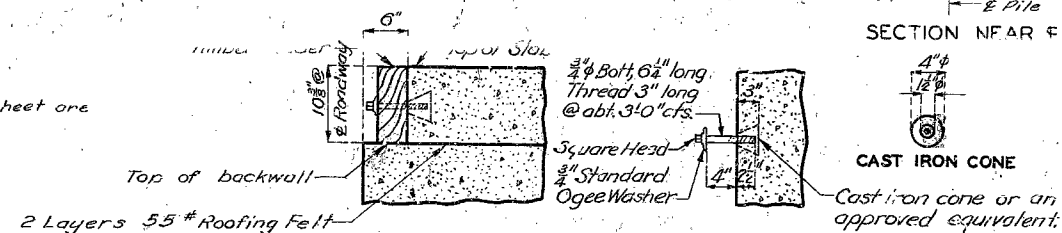
DETAILS OF INTERMEDIATE BENTS NO. 2,3,4,9,10&11



DETAILS OF STEEL PILES  
ALTERNATE "A"

DETAILS OF END BENTS NO. 1&12

Note: All details shown on this sheet are for alternate "A".



### DETAILS OF TIMBER HEADER

*Note: Cost of timber headers complete in place to be included in price bid for concrete.*

Note: This drawing is not to scale. Follow dimensions.

BRIDGE OVER CHARITON RIVER

STATE ROAD FROM NOVINGER NORTHEAST  
ABOUT 7 MILES N.W. OF KIRKSVILLE  
PROJECT NO. RT. 6-SEC. 41-A STA. 519 + 77

ADAIR COUNTY

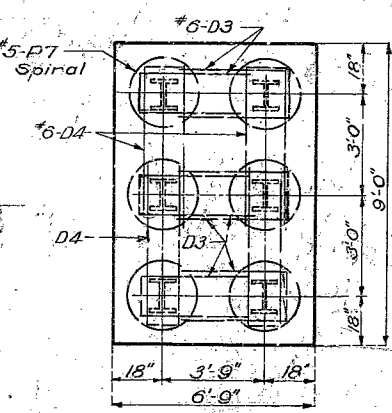
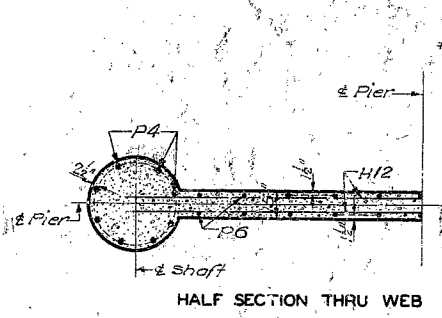
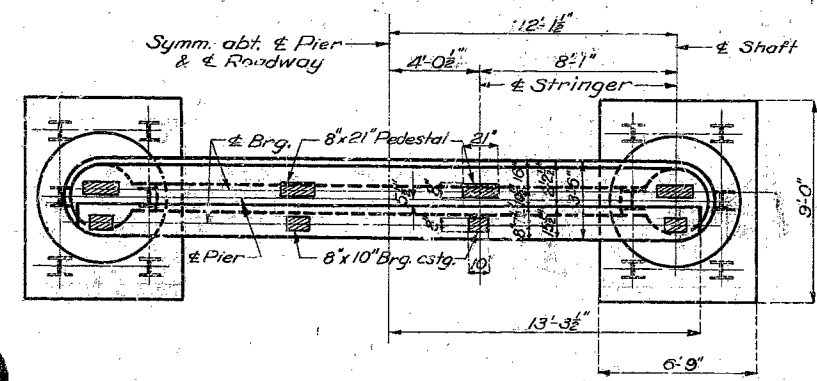
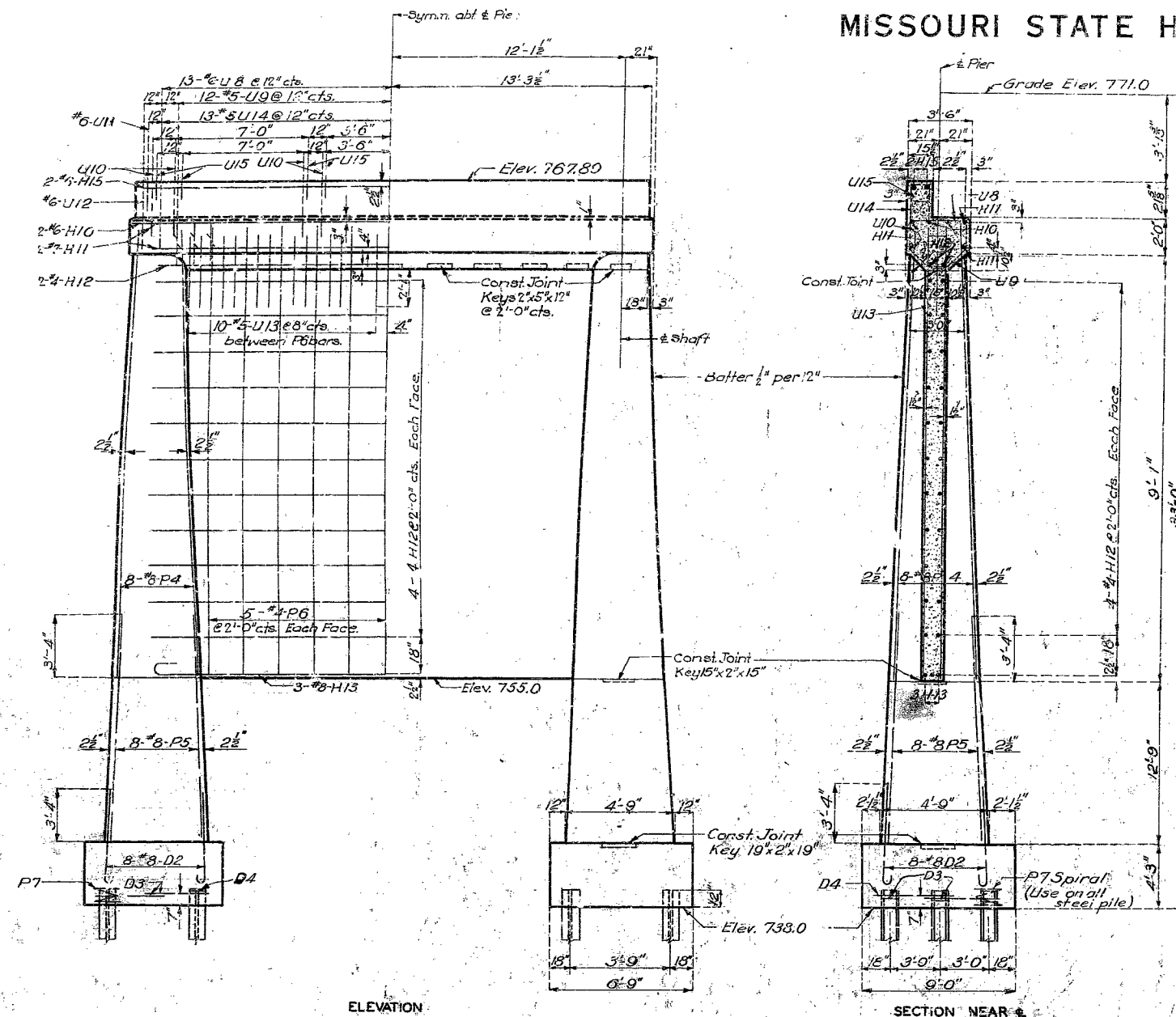
NO CONSTRUCTION CHANGES

L-534

Drawn Oct. 1952 by J.N.N.  
Traced Oct. 1952 by J.C.G.  
Checked Jan. 1953. by C.S.A.

# MISSOURI STATE HIGHWAY DEPARTMENT

FED. ROAD DIST. NO.	STATE	FED. AID PROJ. NO.	FISCAL YEAR	SHEET NO.	TOTAL SHEETS
5	MO.		19		



Note: Plan similar for concrete piles except omission of reinforcing bars D3-D4-P7.

COMPLETE BILL OF REINFORCING STEEL														
No.	Size	Length	Mark	Location	Bending Sketches & Cutting Diagrams					No.	Size	Length	Mark	Location
End Bents No. 1 & 12										Piers No. 6 & 7.				
4	#6	36'-9"	H1	Backwall						16	#8	8'-3"	D1	Foot Pier #6
4	#4	36'-9"	H2	"						4	#6	27'-0"	H10	Beam
10	#6	40'-3"	H3	Beam						8	#7	24'-6"	H11	"
8	#6	38'-3"	H4	"						20	#4	24'-6"	H12	Web & Beam
8	#6	3'-0"	H5	Wing						6	#8	27'-0"	H13	Web
12	#6	7'-0"	H6	"						36	#4	11'-3"	P1	Column
8	#6	10'-3"	T1	"						32	#8	11'-3"	P2	"
8	#6	9'-9"	T2	"						10	#8	28'-3"	P3	Col. Pier #6
148	#5	4'-3"	V1	Backwall						50	#6	6'-3"	U8	Beam
32	#4	3'-9"	V2	Beam						46	#5	6'-6"	U9	"
4	#4	3'-3"	V3	Wing	16	#5	4'-3"	U10	"					
4	#4	4'-3"	V4	"	4	#6	3'-9"	U12	"					
4	#4	5'-6"	V5	"	40	#5	9'-6"	U13	"					
4	#4	6'-9"	V6	"	16	#8	11'-0"	U5	Foot Pier #7					
128	#4	7'-9"	U1	Beam	16	#8	25'-6"	P8	Col. "					
16	#4	3'-3"	U2	"	16	#8	19'-5"	W1	A.B. Well					
64	#7	8'-3"	U3	Alt. "A" only						Superstructure				
16	#7	7'-6"	U4	"						740	#5	3'-0"	C1	Curb (all spans)
16	#7	7'-3"	U5	"						12	#6	3'-6"	C2	" (1-2) (11-12)
64	#7	9'-0"	U16	Alt. "B" only						72	#6	18'-9"	C3	" (2-3) (3-4) (4-5) (5-6) (6-7) (7-8) (8-9) (9-10) (10-11) (11-12)
16	#7	8'-0"	U17	"						36	#6	25'-3"	C4	" (5-6) (7-8)
15	#7	8'-6"	U18	"						14	#6	30'-0"	C5	" (6-7)
Bents No. 2, 3, 4, 9, 10 & 11										4	#5	7'-0"	C6	Flare Curb
48	#6	28'-3"	H8	Beam						4	#5	8'-0"	C7	"
12	#6	26'-3"	H9	"						28	#5	4'-0"	C8	"
312	#4	6'-8"	U6	Alt. "A" only						4	#5	6'-0"	C9	"
48	#4	3'-3"	U2	"						End Post				
156	#4	9'-9"	U19	Alt. "B" only						1016	#5	28'-3"	S1	Slab (all spans)
48	#4	3'-3"	U20	"						506	#5	30'-6"	S2	"
Piers No. 5 & 8										204	#5	19'-0"	S3	" (1-2) (11-12)
32	#8	7'-3"	D2	Footing						612	#5	18'-6"	S4	" (2-3) (3-4) (4-5) (5-6) (6-7) (7-8) (8-9) (9-10) (10-11) (11-12)
24	#6	8'-6"	D3	" Alt. "A"						408	#5	30'-3"	S5	" (5-6) (7-8) (8-9) (9-10) (10-11) (11-12)
16	#6	10'-6"	D4	"						48	#5	7'-0"	S6	" (1-2) (11-12)
4	#6	27'-0"	H10	Beam						38	#5	15'-0"	S7	" (5-6) (7-8) (8-9) (9-10) (10-11) (11-12)
8	#7	24'-5"	H11	"						12	#4	6'-0"	R1	End Post
20	#4	24'-6"	H12	Beam & Web						12	#4	5'-9"	R2	"
4	#6	26'-3"	H15	Haunch	56	#6	3'-9"	R3	"					
6	#8	27'-0"	H13	Web										
32	#8	10'-6"	P4	Column										
32	#8	16'-0"	P5	"										
36	#4	10'-3"	P6	Web										
24	#5	31'-6"	P7	Foot. Alt. "A"										
50	#6	6'-3"	U8	Beam										
46	#5	6'-6"	U9	"										
16	#5	4'-3"	U10	"										
4	#6	21"	U11	"										
4	#6	3'-9"	U12	"										
40	#5	9'-6"	U13	Haunch										
50	#5	6'-6"	U14	"										
16	#5	2'-0"	U15	"										
10	#6	19'-9"	W1	A.B. Well										
C#2														

BRIDGE OVER CHARITON RIVER  
STATE ROAD FROM NOVINGER NORTHEAST  
ABOUT 7 MILES N.W. OF KIRKSVILLE  
PROJECT NO. RT. 6 - SEC 41-A STA. 515+77

ADAIR COUNTY

FINISHED

L-534

86

Assembled Nov. 1952 by WLM & JCG  
Checked Jan. 1953 by C.S.A.

DETAILS OF PIERS NO. 5 & 8

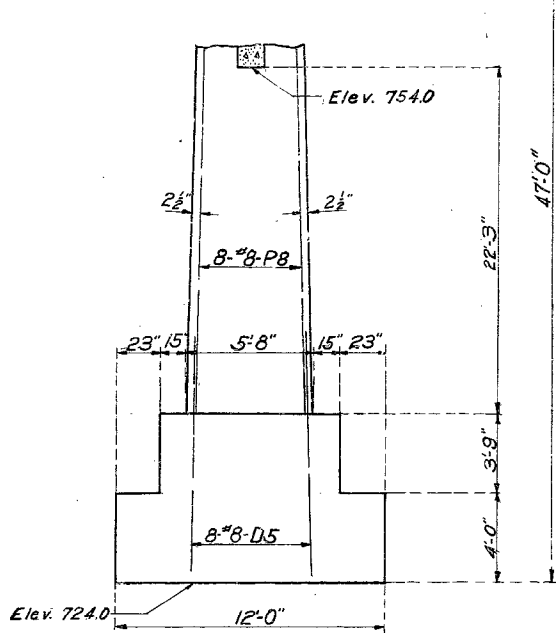
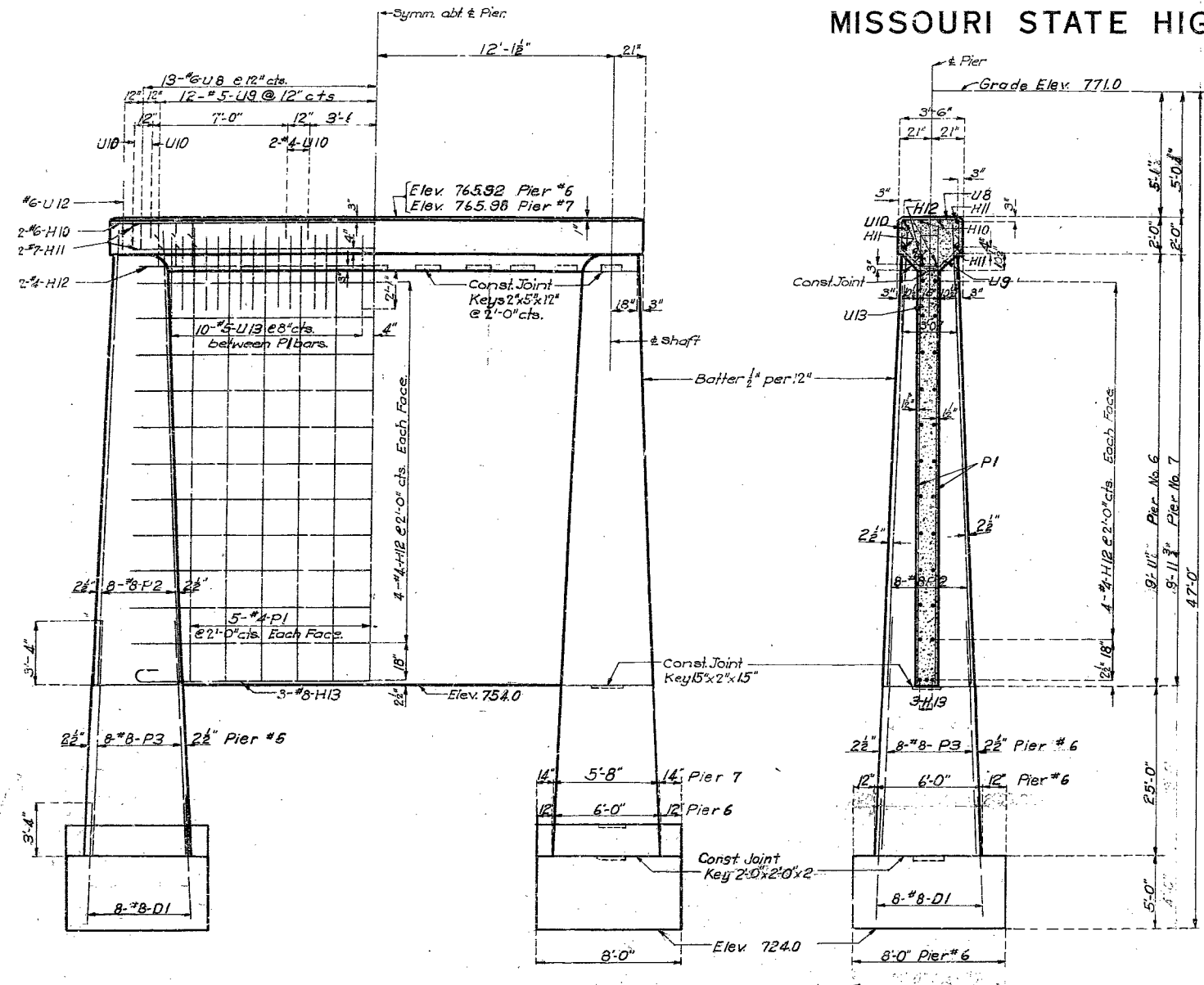
Note: This drawing is not to scale. Follow dimensions.

Sheet No. 3 of 9.

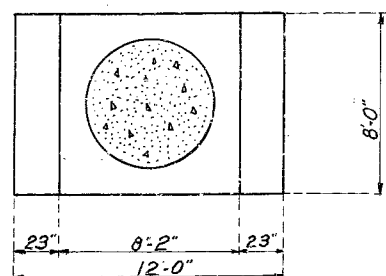
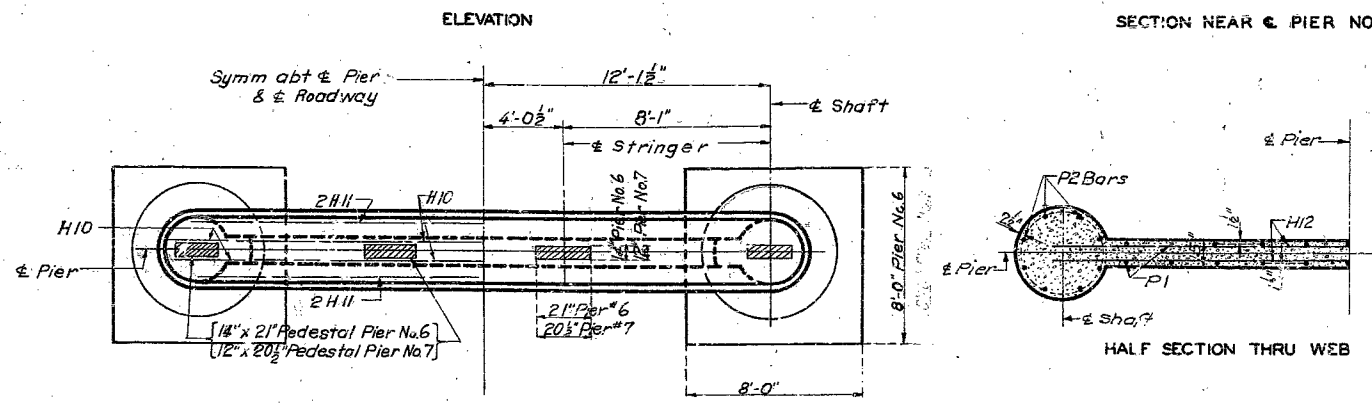
NO CONSTRUCTION CHANGES  
Revised March 26, 1953

# MISSOURI STATE HIGHWAY DEPARTMENT

FED. ROAD DIST. NO.	STATE	FED. AID PROJ. NO.	FISCAL YEAR	SHEET NO.	TOTAL SHEETS
5	MO		19		



PART SECTION NEAR PIER NO. 7  
Note: Details not shown are same as Pier No. 6.



PLAN OF FOOTING PIER NO. 7

## BRIDGE OVER CHARITON RIVER

STATE ROAD FROM NOVINGER NORTHEAST  
ABOUT 7 MILES N.W. OF KIRKSVILLE  
PROJECT NO. RT. 6 - SEG. 41-A STA. 519+77

ADAIR COUNTY

Assembled Nov. 1952 by W.L.W. & A.J.S.  
Checked Jan. 1953 by C.S.A.

DETAILS OF PIERS NO. 6 & 7

Note: This drawing is not to scale. Follow dimensions.

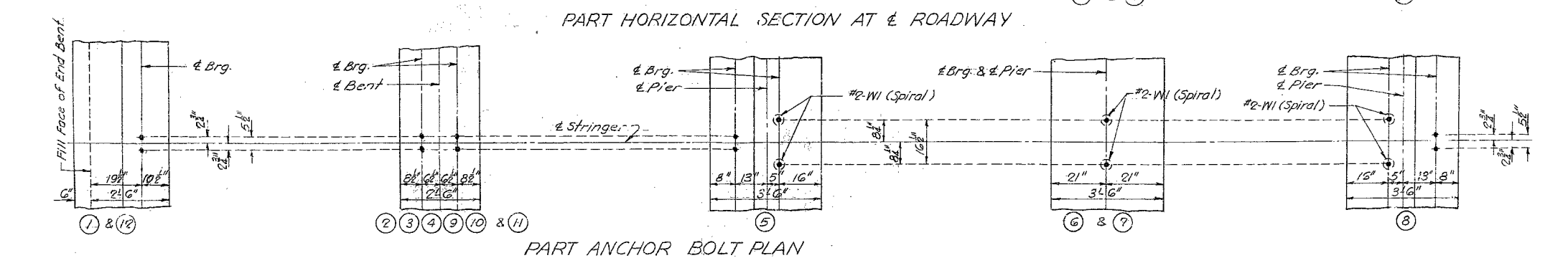
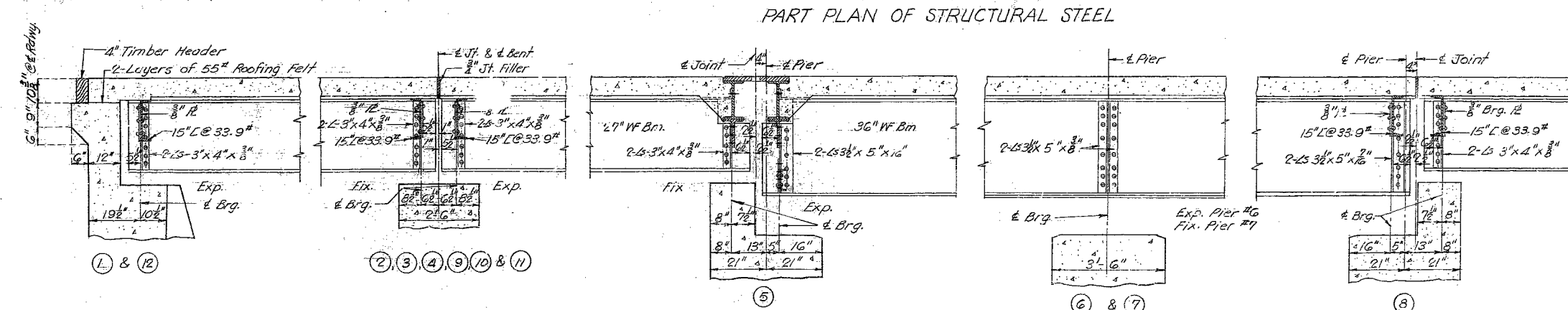
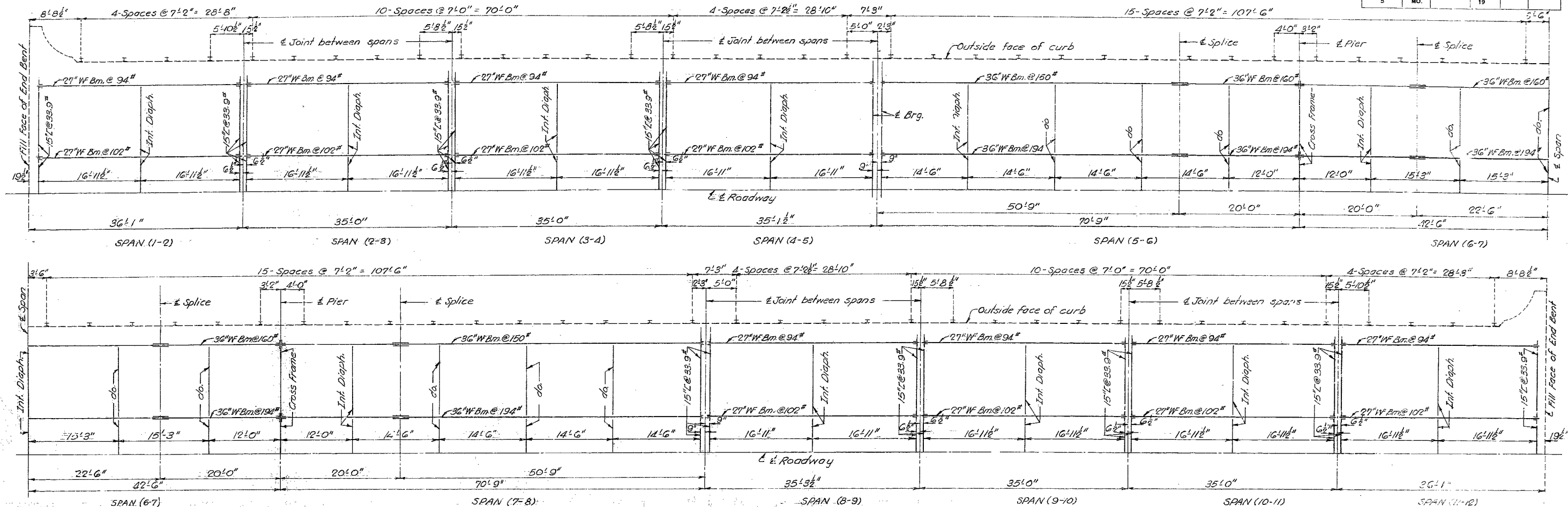
Sheet No. 4 of 9.

SEE FINAL PLANS BROWN LINES

L-534

# MISSOURI STATE HIGHWAY DEPARTMENT

FED. ROAD DIST. NO.	STATE	FED. AID PROJ. NO.	FISCAL YEAR	SHEET NO.	TOTAL SHEETS
5	MO.		19		



BRIDGE OVER CHARITON RIVER  
 STATE ROAD FROM NOVINGER NORTHEAST  
 ABOUT 7 MILES N.W. OF KIRKSVILLE  
 PROJECT NO. RT.6 - SEC. 41A STA. 519+77  
 ADAIR COUNTY

Drawn Nov. 1952 by M.E.L.  
 Checked Jan. 1953 by C.S.A.

Note: This drawing is not to scale. Follow dimensions.

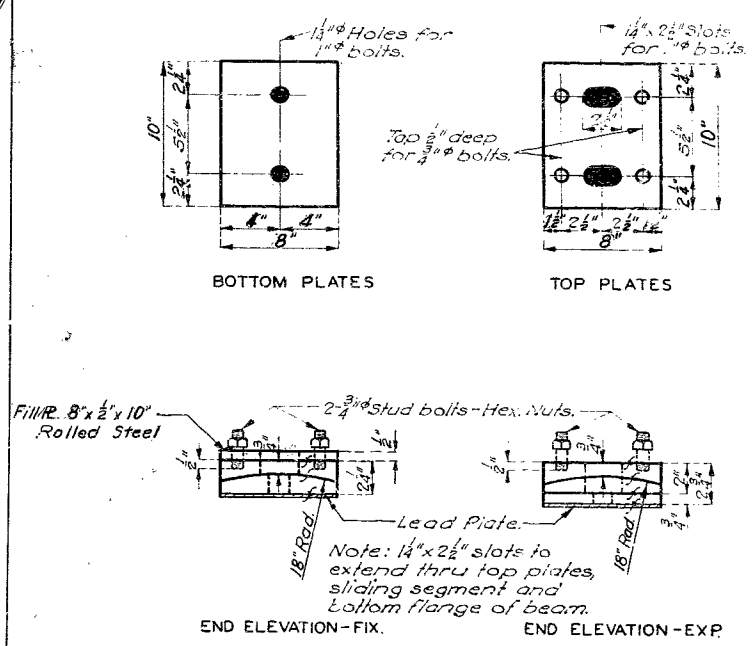
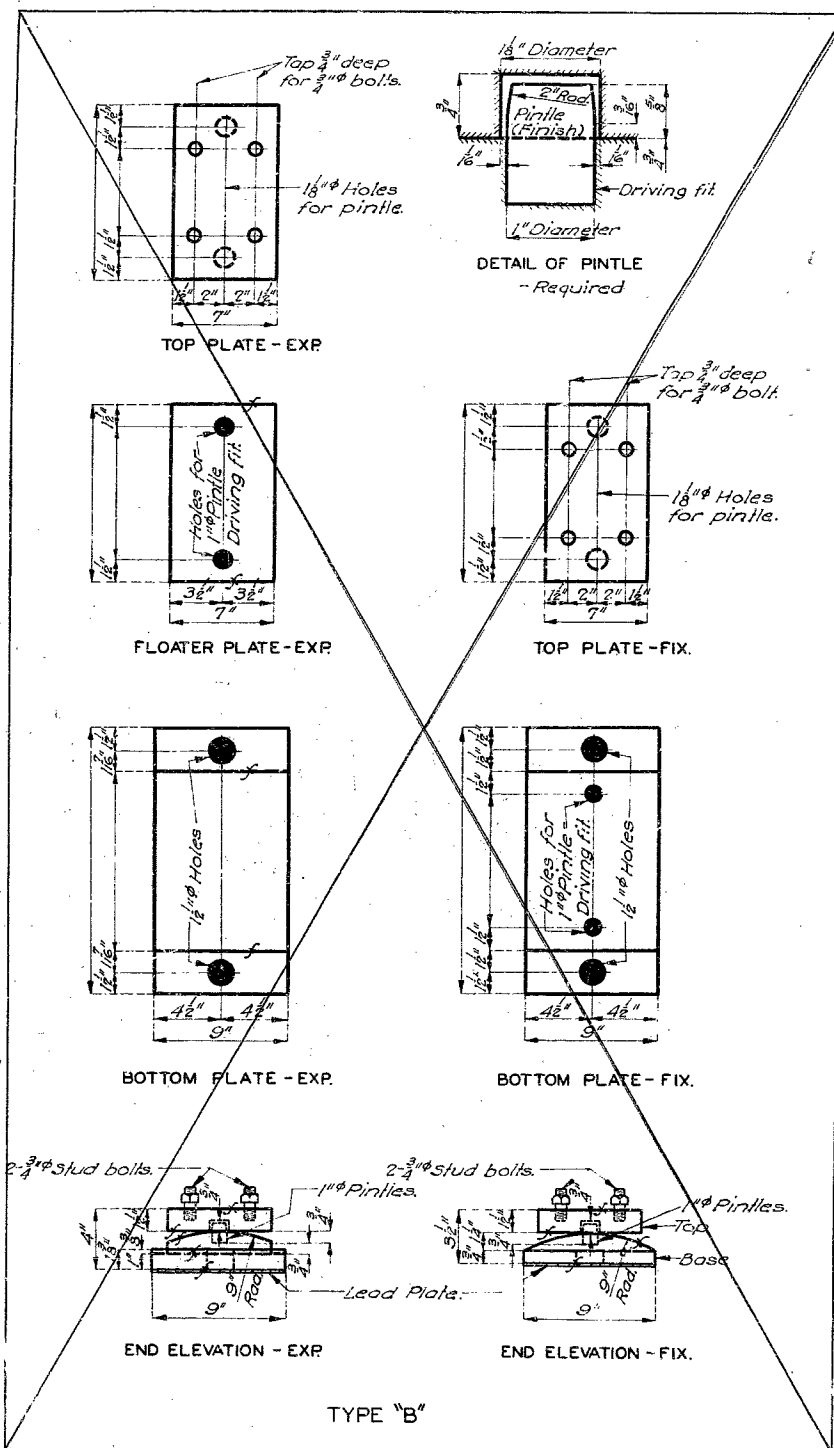
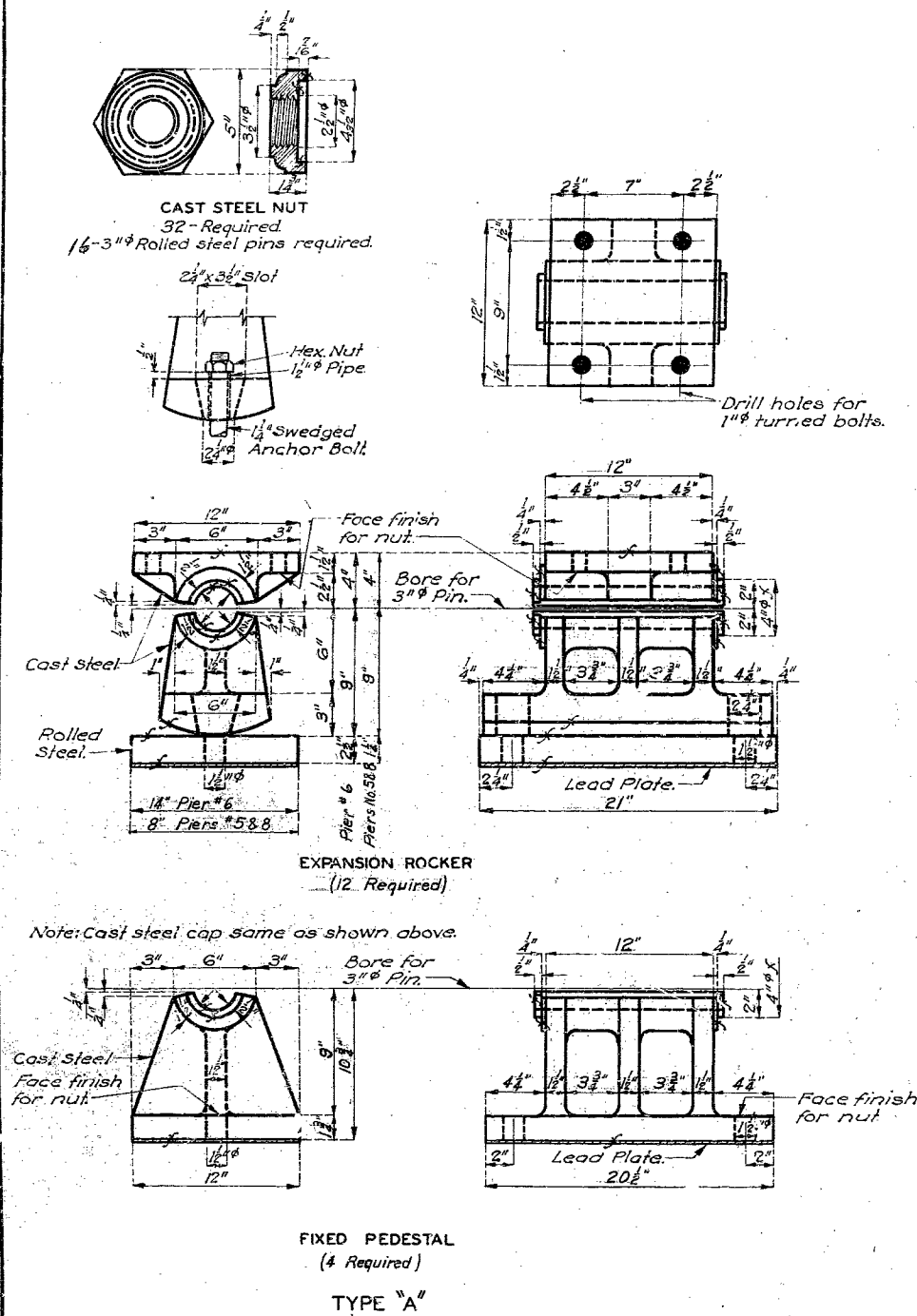
Sheet No. 5 of 9

FINISHED L-534

NO CONSTRUCTION CHANGES

MISSOURI STATE HIGHWAY DEPARTMENT

FED. ROAD DIST. NO.	STATE	FED. AID PROJ. NO.	FISCAL YEAR	SHEET NO.	TOTAL SHEETS
5	MO.		19		



Required: 32 Sets Required. Each set consists of 5 plates each.  
32- Fill 12s- 8" x 1/2" x 10" Required (To be used at Bents No. 2, 3, 4, 9, 10, 8, 11)  
TYPE "C"

**GENERAL NOTES:**  
Finish all surfaces marked F.  
All fillets for Type "A" castings shall have 3" radius.  
Material for Type "A" castings shall be Cast steel, except as noted. Material for Type "B" and Type "C" castings shall be either gray iron alloy or cast steel, but payment will be made as Gray Iron Alloy.  
All pins, bolts, nuts, pipe sleeves, rolled steel, and pintles shall be paid for as Structural Steel.  
Anchor bolts for Type "A" and Type "B" castings shall be 1/4" swedged bolts with Hex. nuts and shall extend 12" into concrete.  
Anchor bolts for Type "C" castings shall be 1" swedged bolts, no heads or nuts and shall extend 10" into concrete. Top ends of anchor bolts shall be above the top of castings but not higher than 3/4" below the top surface of the bottom flange of beam.  
Lead Plates under bearings shall be approximately 1/8" thickness and weigh 8 3/4" Sq. Ft. Cost of lead plates shall be included in price bid for other items.  
Fill plates may be made as part of top casting if desired but payment will be made as Fabricated structural steel.

DETAILS OF BEARING CASTINGS

Note: This drawing is not to scale. Follow dimensions.

Sheet No. 6 of 9. NO CONSTRUCTION CHANGES

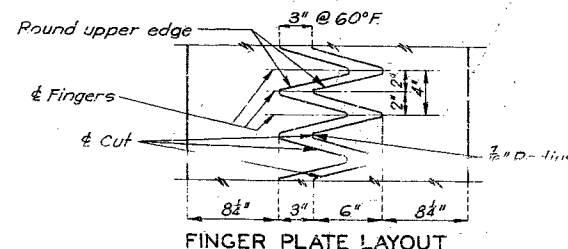
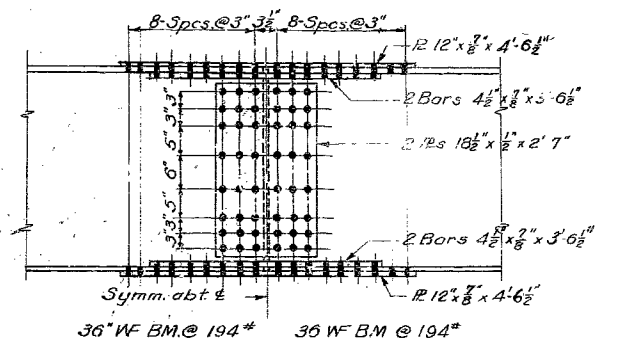
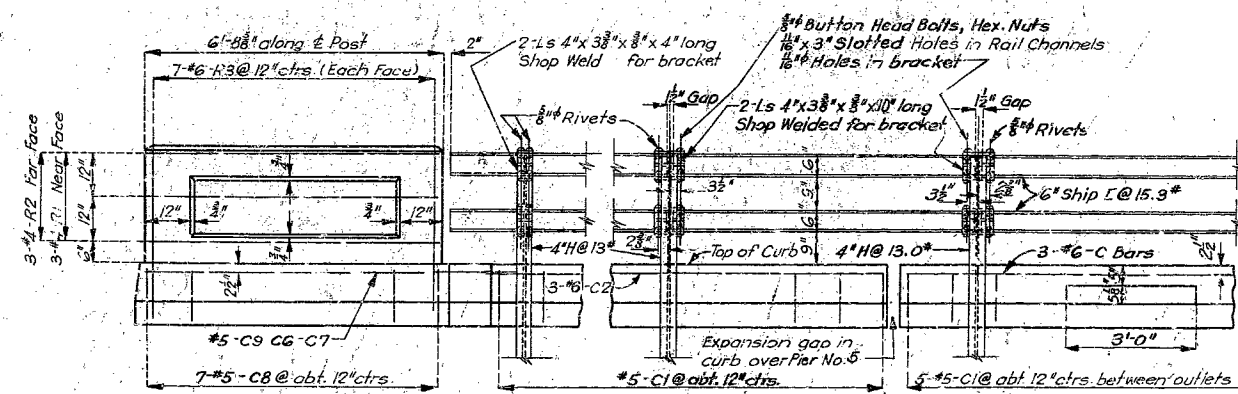
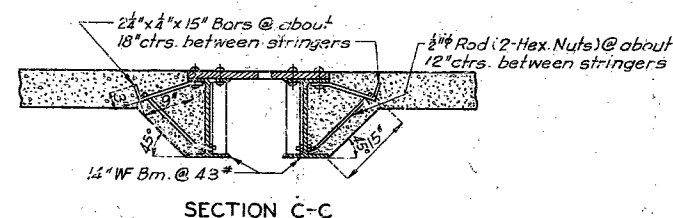
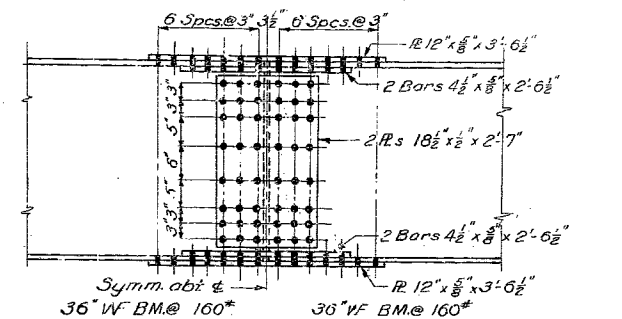
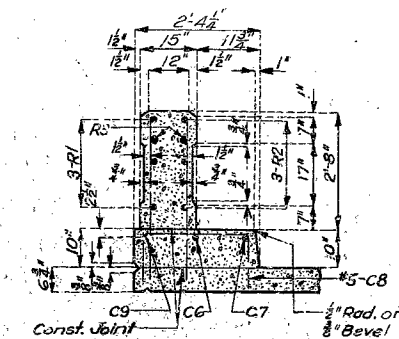
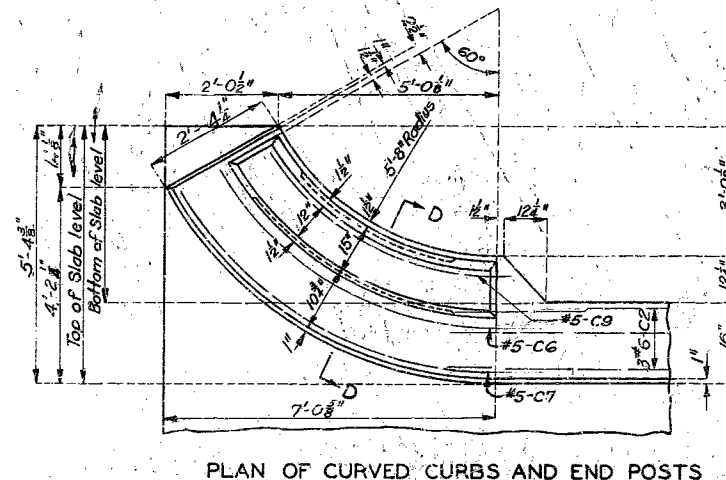
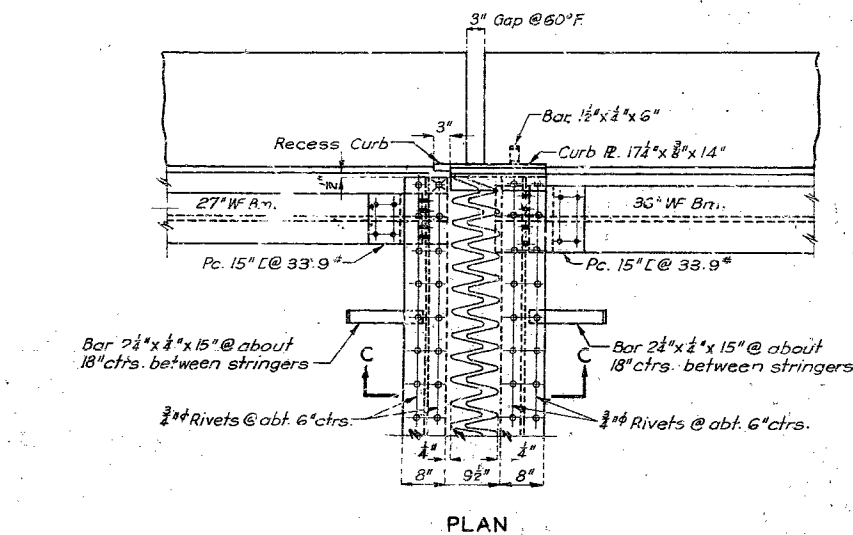
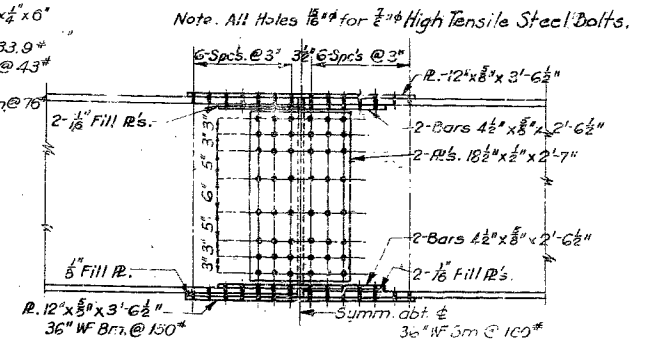
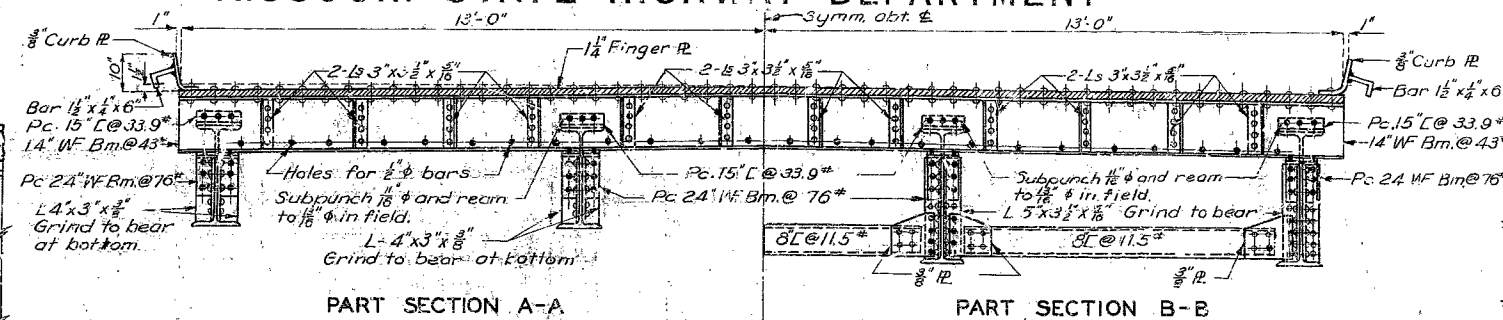
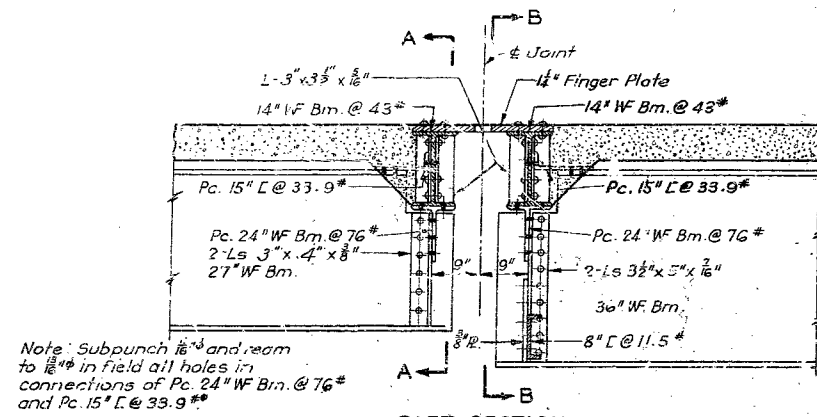
BRIDGE OVER CHARITON RIVER  
STATE ROAD FROM NOVINGER NORTHEAST  
ABOUT 7 MILES NORTHWEST OF KIRKSVILLE  
PROJECT NO. RT. 6 - SEC. 41-A STA. 519 + 77  
ADAIR COUNTY

[illegible]

NO CONSTRUCTION CHANGES

# MISSOURI STATE HIGHWAY DEPARTMENT

FED. ROAD DIST. NO.	STATE	FED. AID PROJ. NO.	FISCAL YEAR	SHEET NO.	TOTAL SHEETS
5	MO	2-7-77	19		

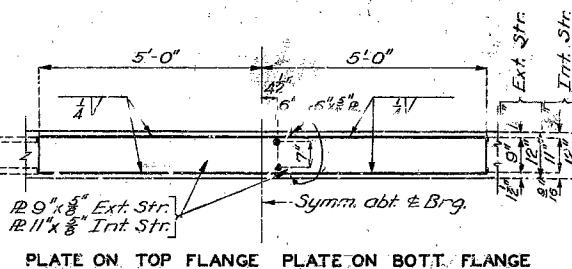


Note: Finger plates shall be cut with a gas torch from one plate 22 $\frac{1}{2}$ " x 14". The surface of cut shall be perpendicular to the surface of plate. The cut shall not exceed 8" in width. The centerline of cut shall not deviate more than  $\frac{1}{16}$ " from the position of  $\frac{1}{2}$ " cut shown above. No part of expansion device may be spliced.

14" Finger Plate and 14" WF Bm @ 43" shall be bent to conform with crown of roadway.

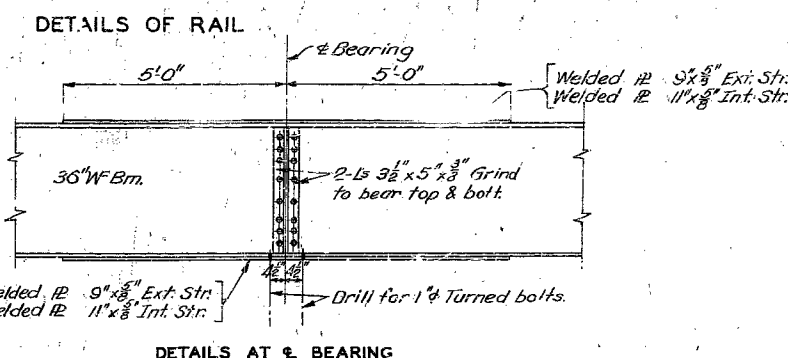
All 3 $\frac{1}{2}$ " x 3" x  $\frac{1}{8}$ " stiffener Ls to be ground to bear top and bottom.

DETAILS OF EXPANSION DEVICE AT PIER NO. 5



WELDING DETAILS FOR PLATES ON STRINGERS AT PIERS NO. 6 & 7

Note: This drawing is not to scale. Follow dimensions.



## BRIDGE OVER CHARITON RIVER

STATE ROAD FROM NOVINGER NORTHEAST  
ABOUT 7 MILES N.W. OF KIRKSVILLE  
PROJECT NO. RT. 6 - SEC. 41-A STA. 519 + 77

ADAIR COUNTY

FINISHED

NO CONSTRUCTION CHANGES

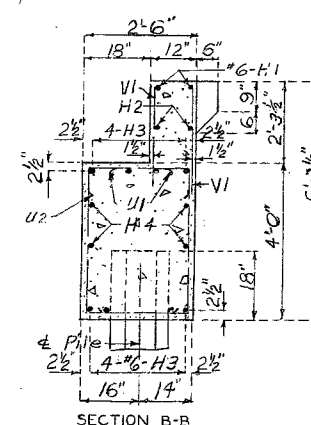
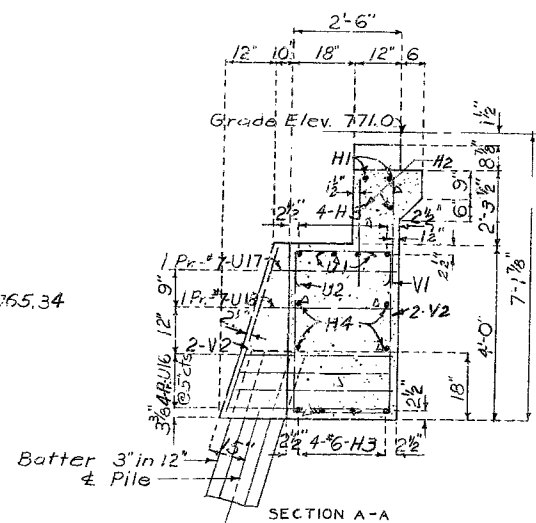
L-534

Drawn Nov. 1952 by W.L.W. & J.C.G.  
Checked Jan. 1953 by C.S.G.

Sheet No. 8 of 9.

22

FINISHED

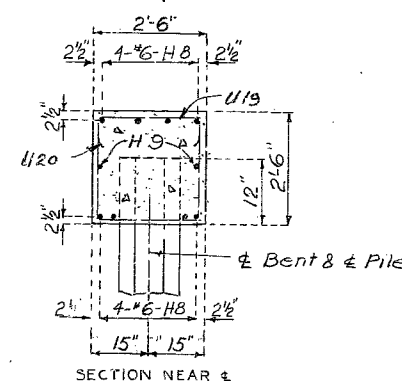


Square head  
3/4" Std. O. Gee  
Washer

Note: Cost of timber headers complete in place to be included in price bid for concrete.

DETAILS OF TIMBER HEADER

### DETAILS OF TIMBER HEADER



BRIDGE OVER CHARITON RIVER

ABOUT 7 MILES N.W. OF KIRKSVILLE

ADAIR

COUNTY

**Note:** This drawing is not to scale. Follow dimensions.

Sheet No. 9 of 9.

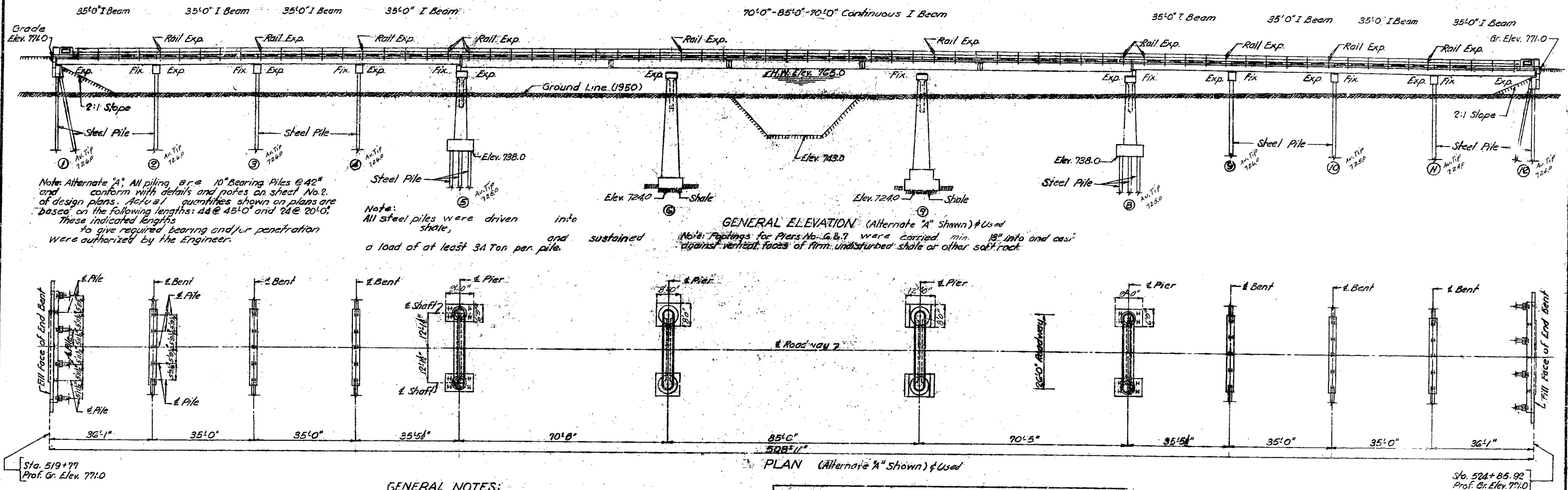
FINISH

L-534

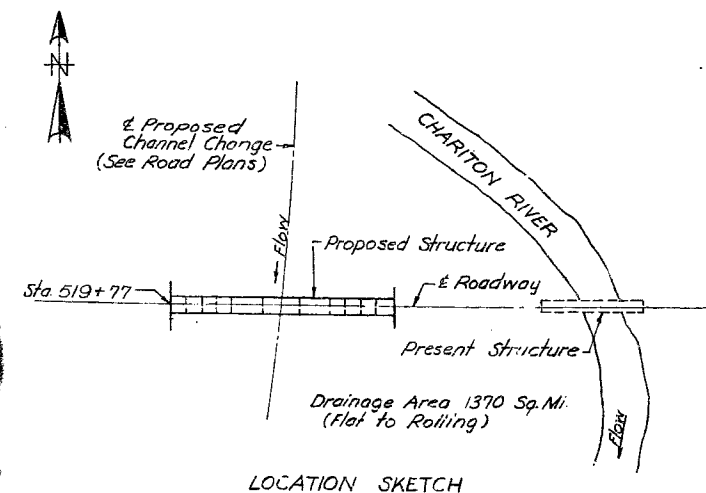
NO CONSTRUCTION CHANGES

# MISSOURI STATE HIGHWAY DEPARTMENT

FED. ROAD DIST. NO.	STATE	FED. AID PROJ. NO.	FISCAL YEAR	SHEET NO.	TOTAL SHEETS
5	MO.		1952		



Item	QUANTITIES		
	Substr.	Superstr.	Total
Class I Excavation for Structures Cu.Yds.	6,385.51		6,385.51
Class II Excavation for Structures Cu.Yds.	5,520.0		5,520.0
Class B Concrete Cu.Yds.	383.6	3,49.4	733.0
Fabricated Structural Steel Lbs.	47,110	382,600	429,710
Steel Castings Lbs.		52,10	52,10
Gray Iron Alloy Castings Lbs.		3,430	3,430
Reinforcing Steel Lbs.	24,180	183,450	207,630
Steel Pile in place (Alt. "A") Lin.Ft.	2,128		2,128
Steel Pile Cut offs (Alt. "A") Lin.Ft.	3.32		3.32
Drilling Test Holes	33		33



B.M. Elev. 772.98 - Rivethead in Guard Rail  
 W. End Bridge Lt. Sta. 527+71.65 (U.S.G.S. Datum)

**BRIDGE OVER CHARITON RIVER**  
 STATE ROAD FROM NOVINGER NORTHEAST  
 ABOUT 7 MILES N.W. OF KIRKSVILLE  
 PROJECT NO. RT-6 - SEC. 41-A STA. 519+77  
 ADAIR COUNTY

SUBMITTED BY J.D. Williams DATE 11/21/53  
 APPROVED BY Rex M. Whiston DATE 11/21/1953

Drawn Nov. 1952 by M.E.L.  
 Checked Jan. 1953 by C.S.A.

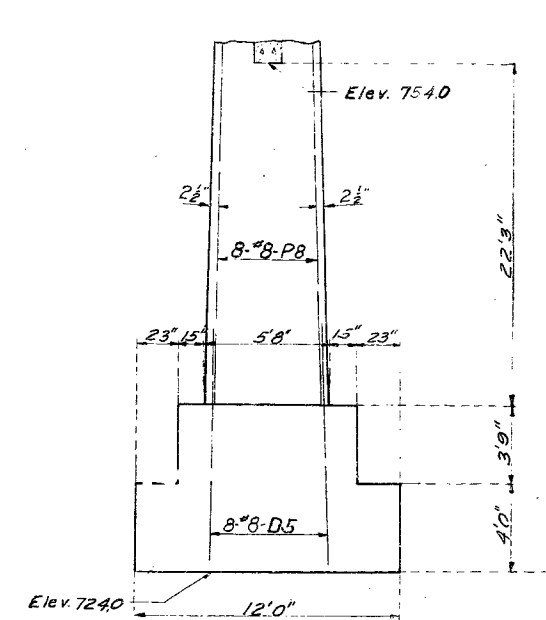
Note: This drawing is not to scale. Follow dimensions.

Sheet No. 1A of 2.

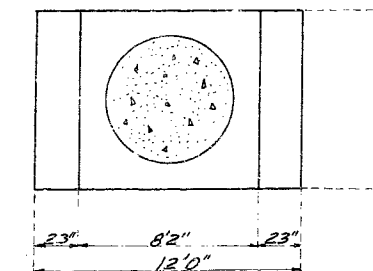
FINISHED

STD. P37-1  
 STD. C-110 R3  
 L-534

FED. ROAD DIST. NO.	STATE	FED. AID PROJ. NO.	FISCAL YEAR	SHEET NO	TOTAL SHEETS
5	MO		1954		



Note: Details not shown are same as Pier A. 6.



PLAN OF FOOTING PIER NO. 7

STATE ROAD FROM NOVINGER NORTHEAST  
ABOUT 7 MILES N.W. OF KIRKSVILLE  
PROJECT NO. RT. 6 - SEC. 41 - A STA. 519 + 77

1915-50

L-534

Assembled Nov. 1952 by WLW & A.J.S.  
checked Jan. 1953 by C.S.A.

## PLAN

DETAILS OF PIERS NO. 6 & 7

Note: This drawing is not to scale. Follow dimensions.

Sheet No. 4A of 2



Missouri Department of Transportation  
Bridge Inventory and Inspection System  
Structural Inventory & Appraisal Sheet

November 13, 2019  
11:43:25am

COUNTY : ADAIR      BRIDGE : L0534      REVIEW STATUS : APPROVED      NBI STATUS : P  
RECORD TYPE : ROUTE CARRIED 'ON' STRUCT      RUN DATE : 1/30/2017      SUBMITTAL YEAR : 2016

GENERAL STRUCTURE INFORMATION

1	State	MISSOURI
2	District	NE
3	County	ADAIR
8	Federal ID No.	6332
27	Year Built	1953
106	Year Reconstructed	0
42A	Type of Service On	HIGHWAY
21	Structure Maintenance	STATE HIGHWAY AGENCY
22	Structure Owner	STATE HIGHWAY AGENCY
33	Br. Median Code	NO MEDIAN
37	Historical Significance	NOT ELIGIBLE FOR NR OF HP
101	Parallel Struc Desg	NONE EXISTS
103	Temporary Structure	NOT TEMPORARY
112	NBIS Bridge Length	YES

ROUTE DESIGNATION INFORMATION

5A	Record Type	ROUTE CARRIED 'ON' STRUCT
5B	Route Signing Prefix	MO
5C	Designated Level of Service	MAINLINE
5D	Route Number	00006
5E	Directional Suffix	NOT APPLICABLE
7	Facility Carried	MO 6 E
12	Base Hwy. Network	YES
13A	LRS Inventory Route No.	0000003556
13B	Subroute No.	00
20	Toll Status	ON FREE ROAD
26	Functional Classification	02-RU PRINCPL ARTRIAL-OTH
28A	Lanes on Structure	02
100	STRAHNET Designation	RTE NOT A DEFENSE HWY
104	National Highway System	ON NHS
105	Federal Lands Highway	NOT APPLICABLE
110	Designated Nat. Network	YES

STRUCTURE LOCATION INFORMATION

4	Place	NINEVEH
	Code	52526
9	Location	S 28 T 63 N R 16 W
11	Milepoint	134.41 miles
16	Latitude	40 D 14 M 4 S
17	Longitude	92 D 41 M 11 S

STRUCTURE TRAFFIC INFORMATION

29	AADT	3810
30	AADT Year	2016
102	Direction of Traffic	2-WAY TRAFFIC
109	AADT Truck Percent	13%
114	Future AADT	6667
115	Future AADT Year	2037

UNDERRECORD INFORMATION

6	Features Intersected	CHARITON RVR
42B	Type of Service Under	WATERWAY
28B	Lanes Under Structure	00
54A	Vert. Clearance Ref.	N/A
54B	Vert. Clearance	0 Ft. 0 In.
55A	Rt. Lat Clear Ref.	N/A
55B	Rt. Lat Clearance	0 Ft. 0 In.
56	Left Lat Clearance	0 Ft. 0 In.
38	Navigation Control	PERMIT NOT REQ
39	Nav Vertical Clear	0 Ft. 0 In.
40	Nav Horizontal Clear	0 Ft. 0 In.
111	Nav. Pier Protection	
116	Nav. Cl. Vert. Clear	

STRUCTURE GEOMETRIC INFORMATION

10	Inventory Rte. Vert. Clear	99 Ft. 99 In.
19	By pass Detour Length	27.90 miles
32	Approach Roadway Width	23 Ft. 11 In.
34	Skew	0.00 Degrees
35	Struct. Flared	NO
47	Total Horiz. Clear	25 Ft. 10 In.
48	Maximum Span Length	84 Ft. 11 In.
49	Structure Length	508 Ft. 0 In.
50A	Left Curb/Sidewalk Width	0 Ft. 0 In.
50B	Right Curb/Sidewalk Width	0 Ft. 0 In.
51	Curb to Curb Br. Width	25 Ft. 10 In.
52	Deck Width (Out-Out)	27 Ft. 6 In.
53	Vert. Clearance Over Deck	99 Ft. 99 In.

Design\_No = L0534



Missouri Department of Transportation  
Bridge Inventory and Inspection System  
Structural Inventory & Appraisal Sheet

November 13, 2019  
11:43:25am

COUNTY : ADAIR BRIDGE : L0534 REVIEW STATUS : APPROVED NBI STATUS : P  
RECORD TYPE : ROUTE CARRIED 'ON' STRUCT RUN DATE : 1/30/2017 SUBMITTAL YEAR : 2016

LOAD RATING AND POSTING INFORMATION			MATERIAL/CONSTRUCTION INFORMATION		
31	Design Load	H 20	43A	Main Struc. Mat type	STEEL CONTINUOUS
41	Structure Status	A - OPEN NO RESTRICTIONS	43B	Main struc Constr. Type	STRINGER/MULTIBEAM - GRD
63	Oper. Rating Meth.	LOAD FACTOR	45	# of Main Spans	3
64	Operating Rating	40 Tons.	44A	Appr Struc. Mat type	STEEL
65	Inventory Rating Meth	LOAD FACTOR	44B	Appr Struc. Cnstr. type	STRINGER/MULTIBEAM - GRD
66	Inventory Rating	24 Tons.	46	# of Approach Span	8
70	Bridge Posting Code	=>LEGAL LOADS	107	Deck Mat/Constr.	1 CONCRETE CIP
PROPOSED IMPROVEMENT INFORMATION			108A	Wear Surf Mat/Constr.	6 BITUMINOUS
Sufficiency Rating 41.5 Percent			108B	Membrane Mat/Constr.	0 NONE
Deficiency Rating FUNCTIONAL			108C	Deck Protect Mat/Constr.	0 NONE
Funding Eligibility FULL			CONDITION RATING INFORMATION		
75A	Proposed Work	REPLACEMENT SUBSTND LOAD	58	Deck Cond. Rating	5
75B	Work Done By	Contract	59	Superstructure Cond. Rating	5
76	New Struc Length	534 Ft. 7 In.	60	Substructure Cond. Rating	6
94	Struc Improve Cost	\$ 2,246,000	61	Channel /Channel Protection Cond. Rating	5
95	Roadway Improve Cost	\$ 224,000	62	Culvert Cond. Rating	N
96	Total Project Cost	\$ 3,370,000	INSPECTION INFORMATION		
97	Year of Cost Estimates	2017	90	Gen. Insp Date	12 / 15
APPRAISAL RATING INFORMATION			91	Gen. Insp. Frequency	24 Months
36A	Br. Rail App. Rating	DOES NOT MEET ACCEPT STND	92A	Frac. Critical Inspection	N Months
36B	Transition Rail App. Rating	MEETS ACCEPTBLE STND	93A	Frac. Critical Insp. Date	
36C	Approach Rail App. Rating	MEETS ACCEPTBLE STND	92B	Underwater Inspection	N Months
36D	Rail End Treat. App. Rating	MEETS ACCEPTBLE STND	93B	Underwater Insp. Date	
67	Struc Eval App. Rating	5	92C	Special Inspection	N Months
68	Deck Geometry App. Rating	3	93C	Special Inspection Date	
69	Underclearance App. Rating	N	BORDER BRIDGE INFORMATION		
71	Waterway Adeq. App. Rating	5	98	Neighboring State Code	
72	Approach Road App. Rating	8	98B	Neighboring State % Respon	
113	Scour Assess App. Rating	3	99	Neighboring State Struc. No.	
APPROVED POSTING INFORMATION			FIELD POSTING INFORMATION		
Approved Posting Category S-1			Field Posting Category S-1		
Ton1 Ton2 Ton3			Ton1 Ton2 Ton3		
Tonnage Values for Posting Sign			Tonnage Values for Posting Sign		
General Text for Posting Sign			General Text for Posting Sign		
NO POSTING REQUIRED			NO POSTING REQUIRED		

Design\_No = L0534



Missouri Department of Transportation  
Bridge Inventory and Inspection System  
Structural Inventory & Appraisal Sheet

November 13, 2019  
11:43:25am

COUNTY : ADAIR      BRIDGE : L0534      REVIEW STATUS : APPROVED      NBI STATUS : P  
RECORD TYPE :      ROUTE CARRIED 'ON' STRUCT      RUN DATE : 1/9/2018      SUBMITTAL YEAR : 2017

GENERAL STRUCTURE INFORMATION			ROUTE DESIGNATION INFORMATION		
1	State	MISSOURI	5A	Record Type	ROUTE CARRIED 'ON' STRUCT
2	District	NE	5B	Route Signing Prefix	MO
3	County	ADAIR	5C	Designated Level of Service	MAINLINE
8	Federal ID No.	6332	5D	Route Number	00006
27	Year Built	1953	5E	Directional Suffix	NOT APPLICABLE
106	Year Reconstructed	0	7	Facility Carried	MO 6 E
42A	Type of Service On	HIGHWAY	12	Base Hwy. Network	YES
21	Structure Maintenance	STATE HIGHWAY AGENCY	13A	LRS Inventory Route No.	0000003556
22	Structure Owner	STATE HIGHWAY AGENCY	13B	Subroute No.	00
33	Br. Median Code	NO MEDIAN	20	Toll Status	ON FREE ROAD
37	Historical Significance	NOT ELIGIBLE FOR NR OF HP	26	Functional Classification	02-RU PRINCPL ARTRIAL-OTH
101	Parallel Struc Desg	NONE EXISTS	28A	Lanes on Structure	02
103	Temporary Structure	NOT TEMPORARY	100	STRAHNET Designation	RTE NOT A DEFENSE HWY
112	NBIS Bridge Length	YES	104	National Highway System	ON NHS
			105	Federal Lands Highway	NOT APPLICABLE
			110	Designated Nat. Network	YES
STRUCTURE LOCATION INFORMATION			STRUCTURE TRAFFIC INFORMATION		
4	Place	NINEVEH	29	AADT	3810
	Code	52526	30	AADT Year	2016
9	Location	S 28 T 63 N R 16 W	102	Direction of Traffic	2-WAY TRAFFIC
11	Milepoint	134.41 miles	109	AADT Truck Percent	8%
16	Latitude	40 D 14 M 4 S	114	Future AADT	6667
17	Longitude	92 D 41 M 11 S	115	Future AADT Year	2036
UNDERRECORD INFORMATION			STRUCTURE GEOMETRIC INFORMATION		
6	Features Intersected	CHARITON RVR	10	Inventory Rte. Vert. Clear	99 Ft. 99 In.
42B	Type of Service Under	WATERWAY	19	By pass Detour Length	27.90 miles
28B	Lanes Under Structure	00	32	Approach Roadway Width	23 Ft. 11 In.
54A	Vert. Clearance Ref.	N/A	34	Skew	0.00 Degrees
54B	Vert. Clearance	0 Ft. 0 In.	35	Struct. Flared	NO
55A	Rt. Lat Clear Ref.	N/A	47	Total Horiz. Clear	25 Ft. 10 In.
55B	Rt. Lat Clearance	0 Ft. 0 In.	48	Maximum Span Length	84 Ft. 11 In.
56	Left Lat Clearance	0 Ft. 0 In.	49	Structure Length	508 Ft. 0 In.
38	Navigation Control	PERMIT NOT REQ	50A	Left Curb/Sidewalk Width	0 Ft. 0 In.
39	Nav Vertical Clear	0 Ft. 0 In.	50B	Right Curb/Sidewalk Width	0 Ft. 0 In.
40	Nav Horizontal Clear	0 Ft. 0 In.	51	Curb to Curb Br. Width	25 Ft. 10 In.
111	Nav. Pier Protection		52	Deck Width (Out-Out)	27 Ft. 6 In.
116	Nav. Cl. Vert. Clear		53	Vert. Clearance Over Deck	99 Ft. 99 In.

Design\_No = L0534



Missouri Department of Transportation  
Bridge Inventory and Inspection System  
Structural Inventory & Appraisal Sheet

November 13, 2019  
11:43:25am

COUNTY : ADAIR BRIDGE : L0534 REVIEW STATUS : APPROVED NBI STATUS : P  
RECORD TYPE : ROUTE CARRIED 'ON' STRUCT RUN DATE : 1/9/2018 SUBMITTAL YEAR : 2017

LOAD RATING AND POSTING INFORMATION			MATERIAL/CONSTRUCTION INFORMATION		
31	Design Load	H 20	43A	Main Struc. Mat type	STEEL CONTINUOUS
41	Structure Status	A - OPEN NO RESTRICTIONS	43B	Main struc Constr. Type	STRINGER/MULTIBEAM - GRD
63	Oper. Rating Meth.	LOAD FACTOR	45	# of Main Spans	3
64	Operating Rating	40 Tons.	44A	Appr Struc. Mat type	STEEL
65	Inventory Rating Meth	LOAD FACTOR	44B	Appr Struc. Cnstr. type	STRINGER/MULTIBEAM - GRD
66	Inventory Rating	24 Tons.	46	# of Approach Span	8
70	Bridge Posting Code	=>LEGAL LOADS	107	Deck Mat/Constr.	1 CONCRETE CIP
PROPOSED IMPROVEMENT INFORMATION			108A	Wear Surf Mat/Constr.	6 BITUMINOUS
Sufficiency Rating 37.5 Percent			108B	Membrane Mat/Constr.	0 NONE
Deficiency Rating STRUCTURAL			108C	Deck Protect Mat/Constr.	0 NONE
Funding Eligibility FULL			CONDITION RATING INFORMATION		
75A	Proposed Work	REPLACEMENT SUBSTND LOAD	58	Deck Cond. Rating	3
75B	Work Done By	Contract	59	Superstructure Cond. Rating	5
76	New Struc Length	534 Ft. 7 In.	60	Substructure Cond. Rating	6
94	Struc Improve Cost	\$ 2,246,000	61	Channel /Channel Protection Cond. Rating	5
95	Roadway Improve Cost	\$ 224,000	62	Culvert Cond. Rating	N
96	Total Project Cost	\$ 3,370,000	INSPECTION INFORMATION		
97	Year of Cost Estimates	2018	90	Gen. Insp Date	12 / 17
APPRAISAL RATING INFORMATION			91	Gen. Insp. Frequency	24 Months
36A	Br. Rail App. Rating	DOES NOT MEET ACCEPT STND	92A	Frac. Critical Inspection	N Months
36B	Transition Rail App. Rating	MEETS ACCEPTBLE STND	93A	Frac. Critical Insp. Date	
36C	Approach Rail App. Rating	MEETS ACCEPTBLE STND	92B	Underwater Inspection	N Months
36D	Rail End Treat. App. Rating	MEETS ACCEPTBLE STND	93B	Underwater Insp. Date	
67	Struc Eval App. Rating	5	92C	Special Inspection	N Months
68	Deck Geometry App. Rating	3	93C	Special Inspection Date	
69	Underclearance App. Rating	N	BORDER BRIDGE INFORMATION		
71	Waterway Adeq. App. Rating	5	98	Neighboring State Code	
72	Approach Road App. Rating	8	98B	Neighboring State % Respon	
113	Scour Assess App. Rating	3	99	Neighboring State Struc. No.	
APPROVED POSTING INFORMATION			FIELD POSTING INFORMATION		
Approved Posting Category S-1			Field Posting Category S-1		
Ton1 Ton2 Ton3			Ton1 Ton2 Ton3		
Tonnage Values for Posting Sign			Tonnage Values for Posting Sign		
General Text for Posting Sign			General Text for Posting Sign		
NO POSTING REQUIRED			NO POSTING REQUIRED		

Design\_No = L0534



Missouri Department of Transportation  
Bridge Inventory and Inspection System  
Structural Inventory & Appraisal Sheet

November 13, 2019  
11:43:25am

COUNTY : ADAIR      BRIDGE : L0534      REVIEW STATUS : APPROVED      NBI STATUS : P  
RECORD TYPE :      ROUTE CARRIED 'ON' STRUCT      RUN DATE : 1/8/2019      SUBMITTAL YEAR : 2018

GENERAL STRUCTURE INFORMATION			ROUTE DESIGNATION INFORMATION		
1	State	MISSOURI	5A	Record Type	ROUTE CARRIED 'ON' STRUCT
2	District	NE	5B	Route Signing Prefix	MO
3	County	ADAIR	5C	Designated Level of Service	MAINLINE
8	Federal ID No.	6332	5D	Route Number	00006
27	Year Built	1953	5E	Directional Suffix	NOT APPLICABLE
106	Year Reconstructed	0	7	Facility Carried	MO 6 E
42A	Type of Service On	HIGHWAY	12	Base Hwy. Network	YES
21	Structure Maintenance	STATE HIGHWAY AGENCY	13A	LRS Inventory Route No.	0000003556
22	Structure Owner	STATE HIGHWAY AGENCY	13B	Subroute No.	00
33	Br. Median Code	NO MEDIAN	20	Toll Status	ON FREE ROAD
37	Historical Significance	NOT ELIGIBLE FOR NR OF HP	26	Functional Classification	02-RU PRINCPL ARTRIAL-OTH
101	Parallel Struc Desg	NONE EXISTS	28A	Lanes on Structure	02
103	Temporary Structure	NOT TEMPORARY	100	STRAHNET Designation	RTE NOT A DEFENSE HWY
112	NBIS Bridge Length	YES	104	National Highway System	ON NHS
			105	Federal Lands Highway	NOT APPLICABLE
			110	Designated Nat. Network	YES
STRUCTURE LOCATION INFORMATION			STRUCTURE TRAFFIC INFORMATION		
4	Place	NINEVEH	29	AADT	3912
	Code	52526	30	AADT Year	2017
9	Location	S 28 T 63 N R 16 W	102	Direction of Traffic	2-WAY TRAFFIC
11	Milepoint	134.41 miles	109	AADT Truck Percent	8%
16	Latitude	40 D 14 M 4 S	114	Future AADT	6846
17	Longitude	92 D 41 M 11 S	115	Future AADT Year	2037
UNDERRECORD INFORMATION			STRUCTURE GEOMETRIC INFORMATION		
6	Features Intersected	CHARITON RVR	10	Inventory Rte. Vert. Clear	99 Ft. 99 In.
42B	Type of Service Under	WATERWAY	19	By pass Detour Length	27.90 miles
28B	Lanes Under Structure	00	32	Approach Roadway Width	23 Ft. 11 In.
54A	Vert. Clearance Ref.	N/A	34	Skew	0.00 Degrees
54B	Vert. Clearance	0 Ft. 0 In.	35	Struct. Flared	NO
55A	Rt. Lat Clear Ref.	N/A	47	Total Horiz. Clear	25 Ft. 10 In.
55B	Rt. Lat Clearance	0 Ft. 0 In.	48	Maximum Span Length	84 Ft. 11 In.
56	Left Lat Clearance	0 Ft. 0 In.	49	Structure Length	508 Ft. 0 In.
38	Navigation Control	PERMIT NOT REQ	50A	Left Curb/Sidewalk Width	0 Ft. 0 In.
39	Nav Vertical Clear	0 Ft. 0 In.	50B	Right Curb/Sidewalk Width	0 Ft. 0 In.
40	Nav Horizontal Clear	0 Ft. 0 In.	51	Curb to Curb Br. Width	25 Ft. 10 In.
111	Nav. Pier Protection		52	Deck Width (Out-Out)	27 Ft. 6 In.
116	Nav. Cl. Vert. Clear		53	Vert. Clearance Over Deck	99 Ft. 99 In.

Design\_No = L0534



Missouri Department of Transportation  
Bridge Inventory and Inspection System  
Structural Inventory & Appraisal Sheet

November 13, 2019  
11:43:25am

COUNTY : ADAIR BRIDGE : L0534 REVIEW STATUS : APPROVED NBI STATUS : P  
RECORD TYPE : ROUTE CARRIED 'ON' STRUCT RUN DATE : 1/8/2019 SUBMITTAL YEAR : 2018

LOAD RATING AND POSTING INFORMATION				MATERIAL/CONSTRUCTION INFORMATION				
31	Design Load	H 20		43A	Main Struc. Mat type	STEEL CONTINUOUS		
41	Structure Status	A - OPEN NO RESTRICTIONS		43B	Main struc Constr. Type	STRINGER/MULTIBEAM - GRD		
63	Oper. Rating Meth.	LOAD FACTOR		45	# of Main Spans	3		
64	Operating Rating	40 Tons.		44A	Appr Struc. Mat type	STEEL		
65	Inventory Rating Meth	LOAD FACTOR		44B	Appr Struc. Cnstr. type	STRINGER/MULTIBEAM - GRD		
66	Inventory Rating	24 Tons.		46	# of Approach Span	8		
70	Bridge Posting Code	=>LEGAL LOADS		107	Deck Mat/Constr.	1 CONCRETE CIP		
PROPOSED IMPROVEMENT INFORMATION				108A	Wear Surf Mat/Constr.	6 BITUMINOUS		
	Sufficiency Rating	37.5	Percent	108B	Membrane Mat/Constr.	0 NONE		
	Deficiency Rating	STRUCTURAL		108C	Deck Protect Mat/Constr.	0 NONE		
	Funding Eligibility	FULL		CONDITION RATING INFORMATION				
75A	Proposed Work	REPLACEMENT SUBSTND LOAD		58	Deck Cond. Rating	3		
75B	Work Done By	Contract		59	Superstructure Cond. Rating	5		
76	New Struc Length	534 Ft. 7 In.		60	Substructure Cond. Rating	6		
94	Struc Improve Cost	\$ 2,246,000		61	Channel /Channel Protection Cond. Rating	5		
95	Roadway Improve Cost	\$ 224,000		62	Culvert Cond. Rating	N		
96	Total Project Cost	\$ 3,370,000		INSPECTION INFORMATION				
97	Year of Cost Estimates	2019		90	Gen. Insp Date	12 / 17		
APPRAISAL RATING INFORMATION				91	Gen. Insp. Frequency	24	Months	
36A	Br. Rail App. Rating	DOES NOT MEET ACCEPT STND		92A	Frac. Critical Inspection	N	Months	
36B	Transition Rail App. Rating	MEETS ACCEPTBLE STND		93A	Frac. Critical Insp. Date			
36C	Approach Rail App. Rating	MEETS ACCEPTBLE STND		92B	Underwater Inspection	Y	Months 60	
36D	Rail End Treat. App. Rating	MEETS ACCEPTBLE STND		93B	Underwater Insp. Date	7 / 18		
67	Struc Eval App. Rating	5		92C	Special Inspection	N	Months	
68	Deck Geometry App. Rating	3		93C	Special Inspection Date			
69	Underclearance App. Rating	N		BORDER BRIDGE INFORMATION				
71	Waterway Adeq. App. Rating	5		98	Neighboring State Code			
72	Approach Road App. Rating	8		98B	Neighboring State % Respon			
113	Scour Assess App. Rating	3		99	Neighboring State Struc. No.			
APPROVED POSTING INFORMATION				FIELD POSTING INFORMATION				
Approved Posting Category		S-1		Field Posting Category		S-1		
		Ton1	Ton2	Ton3		Ton1	Ton2	Ton3
Tonnage Values for Posting Sign				Tonnage Values for Posting Sign				
General Text for Posting Sign				General Text for Posting Sign				
NO POSTING REQUIRED				NO POSTING REQUIRED				

Design\_No = L0534



Missouri Department of Transportation  
Bridge Inventory and Inspection System  
Structural Inventory & Appraisal Sheet

November 13, 2019  
11:43:25am

COUNTY : ADAIR      BRIDGE : L0534      REVIEW STATUS : REVIEW      NBI STATUS : T  
RECORD TYPE :      ROUTE CARRIED 'ON' STRUCT      RUN DATE : 6/7/2019      SUBMITTAL YEAR : 2019

GENERAL STRUCTURE INFORMATION			ROUTE DESIGNATION INFORMATION		
1	State	MISSOURI	5A	Record Type	ROUTE CARRIED 'ON' STRUCT
2	District	NE	5B	Route Signing Prefix	MO
3	County	ADAIR	5C	Designated Level of Service	MAINLINE
8	Federal ID No.	6332	5D	Route Number	00006
27	Year Built	1953	5E	Directional Suffix	NOT APPLICABLE
106	Year Reconstructed	0	7	Facility Carried	MO 6 E
42A	Type of Service On	HIGHWAY	12	Base Hwy. Network	YES
21	Structure Maintenance	STATE HIGHWAY AGENCY	13A	LRS Inventory Route No.	0000003556
22	Structure Owner	STATE HIGHWAY AGENCY	13B	Subroute No.	00
33	Br. Median Code	NO MEDIAN	20	Toll Status	ON FREE ROAD
37	Historical Significance	NOT ELIGIBLE FOR NR OF HP	26	Functional Classification	02-RU PRINCPL ARTRIAL-OTH
101	Parallel Struc Desg	NONE EXISTS	28A	Lanes on Structure	02
103	Temporary Structure	NOT TEMPORARY	100	STRAHNET Designation	RTE NOT A DEFENSE HWY
112	NBIS Bridge Length	YES	104	National Highway System	ON NHS
			105	Federal Lands Highway	NOT APPLICABLE
			110	Designated Nat. Network	YES
STRUCTURE LOCATION INFORMATION			STRUCTURE TRAFFIC INFORMATION		
4	Place	NINEVEH	29	AADT	3908
	Code	52526	30	AADT Year	2018
9	Location	S 28 T 63 N R 16 W	102	Direction of Traffic	2-WAY TRAFFIC
11	Milepoint	135.50 miles	109	AADT Truck Percent	8%
16	Latitude	40 D 14 M 4 S	114	Future AADT	6839
17	Longitude	92 D 41 M 11 S	115	Future AADT Year	2038
UNDERRECORD INFORMATION			STRUCTURE GEOMETRIC INFORMATION		
6	Features Intersected	CHARITON RVR	10	Inventory Rte. Vert. Clear	99 Ft. 99 In.
42B	Type of Service Under	WATERWAY	19	By pass Detour Length	28.13 miles
28B	Lanes Under Structure	00	32	Approach Roadway Width	23 Ft. 11 In.
54A	Vert. Clearance Ref.	N/A	34	Skew	0.00 Degrees
54B	Vert. Clearance	0 Ft. 0 In.	35	Struct. Flared	NO
55A	Rt. Lat Clear Ref.	N/A	47	Total Horiz. Clear	25 Ft. 11 In.
55B	Rt. Lat Clearance	0 Ft. 0 In.	48	Maximum Span Length	84 Ft. 12 In.
56	Left Lat Clearance	0 Ft. 0 In.	49	Structure Length	508 Ft. 10 In.
38	Navigation Control	PERMIT NOT REQ	50A	Left Curb/Sidewalk Width	0 Ft. 0 In.
39	Nav Vertical Clear	0 Ft. 0 In.	50B	Right Curb/Sidewalk Width	0 Ft. 0 In.
40	Nav Horizontal Clear	0 Ft. 0 In.	51	Curb to Curb Br. Width	25 Ft. 11 In.
111	Nav. Pier Protection		52	Deck Width (Out-Out)	27 Ft. 7 In.
116	Nav. Cl. Vert. Clear		53	Vert. Clearance Over Deck	99 Ft. 99 In.

Design\_No = L0534



Missouri Department of Transportation  
Bridge Inventory and Inspection System  
Structural Inventory & Appraisal Sheet

November 13, 2019  
11:43:25am

COUNTY : ADAIR      BRIDGE : L0534      REVIEW STATUS : REVIEW      NBI STATUS : T  
RECORD TYPE : ROUTE CARRIED 'ON' STRUCT      RUN DATE : 6/7/2019      SUBMITTAL YEAR : 2019

LOAD RATING AND POSTING INFORMATION				MATERIAL/CONSTRUCTION INFORMATION				
31	Design Load	H 20		43A	Main Struc. Mat type	STEEL CONTINUOUS		
41	Structure Status	OPEN NO RESTRICTIONS		43B	Main struc Constr. Type	STRINGER/MULTIBEAM - GRD		
63	Oper. Rating Meth.	LOAD FACTOR		45	# of Main Spans	3		
64	Operating Rating	40 Tons.		44A	Appr Struc. Mat type	STEEL		
65	Inventory Rating Meth	LOAD FACTOR		44B	Appr Struc. Cnstr. type	STRINGER/MULTIBEAM - GRD		
66	Inventory Rating	24 Tons.		46	# of Approach Span	8		
70	Bridge Posting Code	=>LEGAL LOADS		107	Deck Mat/Constr.	1 CONCRETE CIP		
PROPOSED IMPROVEMENT INFORMATION				108A	Wear Surf Mat/Constr.	6 BITUMINOUS		
	Sufficiency Rating	37.5	Percent	108B	Membrane Mat/Constr.	0 NONE		
	Deficiency Rating	STRUCTURAL		108C	Deck Protect Mat/Constr.	0 NONE		
	Funding Eligibility	FULL		CONDITION RATING INFORMATION				
75A	Proposed Work	REPLACEMENT SUBSTND LOAD		58	Deck Cond. Rating	3		
75B	Work Done By	Contract		59	Superstructure Cond. Rating	5		
76	New Struc Length	534 Ft. 9 In.		60	Substructure Cond. Rating	6		
94	Struc Improve Cost	\$ 2,246,000		61	Channel /Channel Protection Cond. Rating	5		
95	Roadway Improve Cost	\$ 224,000		62	Culvert Cond. Rating	N		
96	Total Project Cost	\$ 3,370,000		INSPECTION INFORMATION				
97	Year of Cost Estimates	2019		90	Gen. Insp Date	12 / 17		
APPRAISAL RATING INFORMATION				91	Gen. Insp. Frequency	24	Months	
36A	Br. Rail App. Rating	DOES NOT MEET ACCEPT STND		92A	Frac. Critical Inspection	N	Months	
36B	Transition Rail App. Rating	MEETS ACCEPTBLE STND		93A	Frac. Critical Insp. Date			
36C	Approach Rail App. Rating	MEETS ACCEPTBLE STND		92B	Underwater Inspection	Y	Months 60	
36D	Rail End Treat. App. Rating	MEETS ACCEPTBLE STND		93B	Underwater Insp. Date	7 / 18		
67	Struc Eval App. Rating	5		92C	Special Inspection	N	Months	
68	Deck Geometry App. Rating	3		93C	Special Inspection Date			
69	Underclearance App. Rating	N		BORDER BRIDGE INFORMATION				
71	Waterway Adeq. App. Rating	5		98	Neighboring State Code			
72	Approach Road App. Rating	8		98B	Neighboring State % Respon			
113	Scour Assess App. Rating	3		99	Neighboring State Struc. No.			
APPROVED POSTING INFORMATION				FIELD POSTING INFORMATION				
Approved Posting Category		S-1		Field Posting Category		S-1		
		Ton1	Ton2	Ton3		Ton1	Ton2	Ton3
Tonnage Values for Posting Sign				Tonnage Values for Posting Sign				
General Text for Posting Sign				General Text for Posting Sign				
NO POSTING REQUIRED				NO POSTING REQUIRED				

Design\_No = L0534

SHOP DRAWINGS FOR STEEL STRUCTURE

Adair COUNTY BRIDGE NO. L-534

PROJECT NO. RG-41-A

INDEX

ERECTION SHEET NOS. E1 THRU \_\_\_\_\_

GENERAL MATERIALS SHEET NOS. 1 THRU 10

BOLT LIST SHEET NOS. \_\_\_\_\_ THRU \_\_\_\_\_

BEARING DETAILS SHEET NOS. \_\_\_\_\_ THRU \_\_\_\_\_

BRIDGE RAILING DETAILS SHEET NOS. \_\_\_\_\_ THRU \_\_\_\_\_

PAINT DETAILS SHEET NOS. \_\_\_\_\_ THRU \_\_\_\_\_

BLOCKING DIAGRAM SHEET NOS. \_\_\_\_\_ THRU \_\_\_\_\_

EXPANSION DEVICE DETAILS SHEET NOS. \_\_\_\_\_ THRU \_\_\_\_\_

SHOP WELDED SPLICE DETAILS SHEET NOS. \_\_\_\_\_ THRU \_\_\_\_\_

WEB AND FLANGE CUTTING DETAILS SHEETS NOS. \_\_\_\_\_ THRU \_\_\_\_\_

DRAIN DETAILS SHEET NOS. \_\_\_\_\_ THRU \_\_\_\_\_

DRAINAGE SYSTEM DETAILS SHEET NOS. \_\_\_\_\_ THRU \_\_\_\_\_

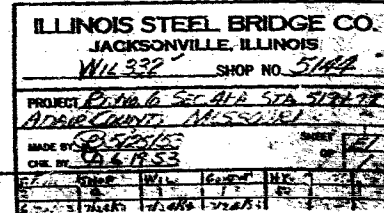
STEEL GRID FLOORING DETAILS SHEET NOS. \_\_\_\_\_ THRU \_\_\_\_\_

PEDESTRIAN FENCE DETAILS SHEET NOS. \_\_\_\_\_ THRU \_\_\_\_\_

666

[illegible]

APPROVED JUL 27 1953  
MO. STATE HIGHWAY DEPT.  
*J. A. Williams*  
BRIDGE ENGINEER  
THIS APPROVAL IS FOR GENERAL  
DESIGN FEATURES ONLY.

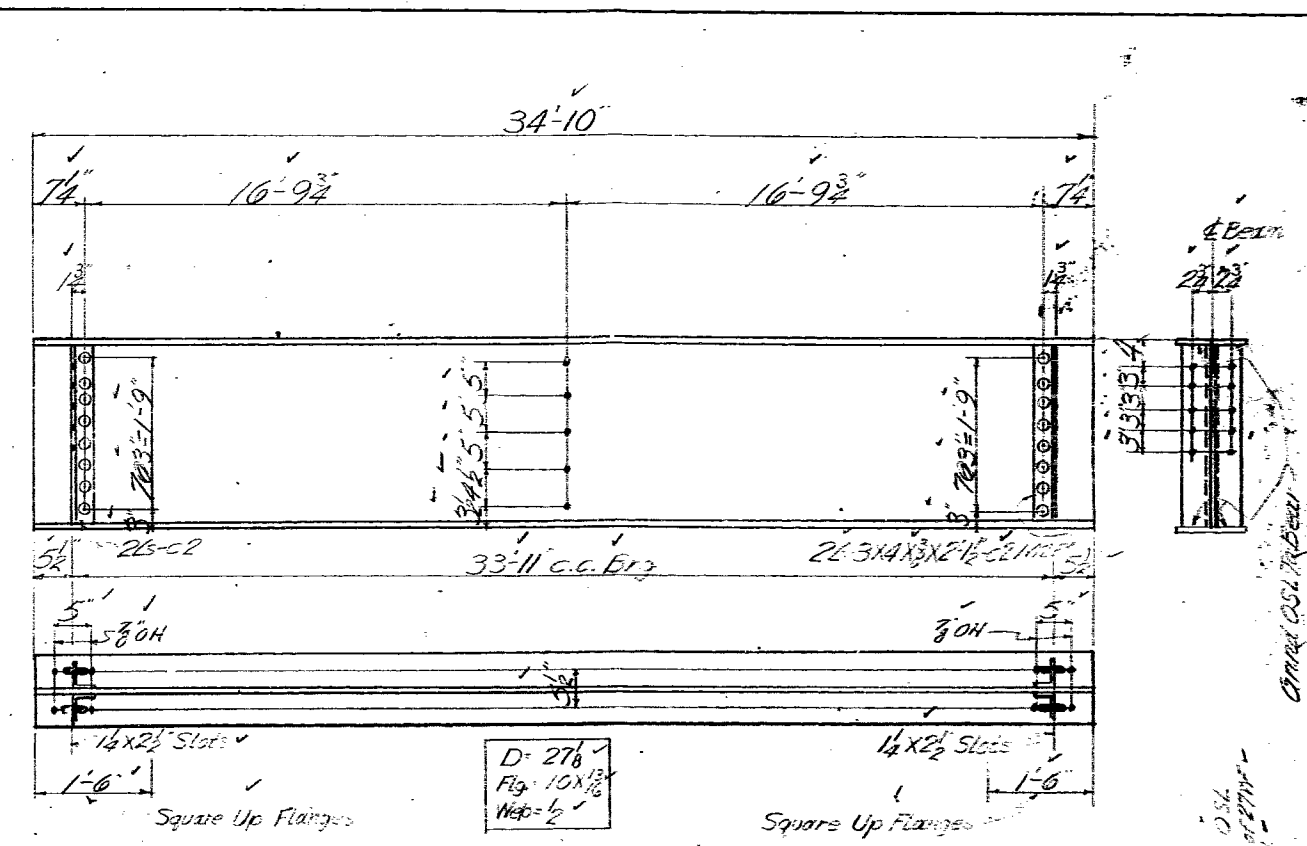


2 High Tensile Field Bolts (Regular Has Any Hx Nuts)												
Ship	Beam	Grid	Lat.	Long.	Loc.	Ship	Beam	Grid	Lat.	Long.	Location	
460	450	3	2	59	266 271	D1 to Bms	9	8	14	29	165 5	C1 To I.S. Bms
82	80	5	24	162	50 51	DRT. O.S. Bms	9	8	14	29	168 5	CR To O.S. Bms
82	80	18	23	168	54 56	D2 To I.S. Bms	9	8	14	31	172 16	C2 To I.S. Bms
133	130	18	23	165	84 86	D3 To O.S. Bms	34	32	18	28	165 21	C3 To EDU EDD
133	130	18	3	172	94 96	D4 To I.S. Bms	26	24	18	28	162 15	C3 To Bms
32	30	18	24	162	19 20	D4 To Bms	26	24	18	28	162 15	CR To Bms
26	24	18	24	162	15 16	D5 To Bms	74	72	16	28	165 41	F1 To Bms
310	304	18	24	162	188 192	R81 to Bms						
260	256	1	24	162	159 161	R82 To Bms						
285	280	3	2	59	165 168	R83, R82 To Posts						
143	140	2	18	156	18 20	da						
26	24	18	22	162	16 17	SLIP. TO EDU EDD	20	24	18	28	165 5	15" W. EXHA. BRTS.
7	8	18	22	165	5 6	C1 To O.S. Bms	4304	4224			111 45474	
Total Pos. Wcs. 1193						Boring Time 504 Drilling Time 111 Total Time 615						

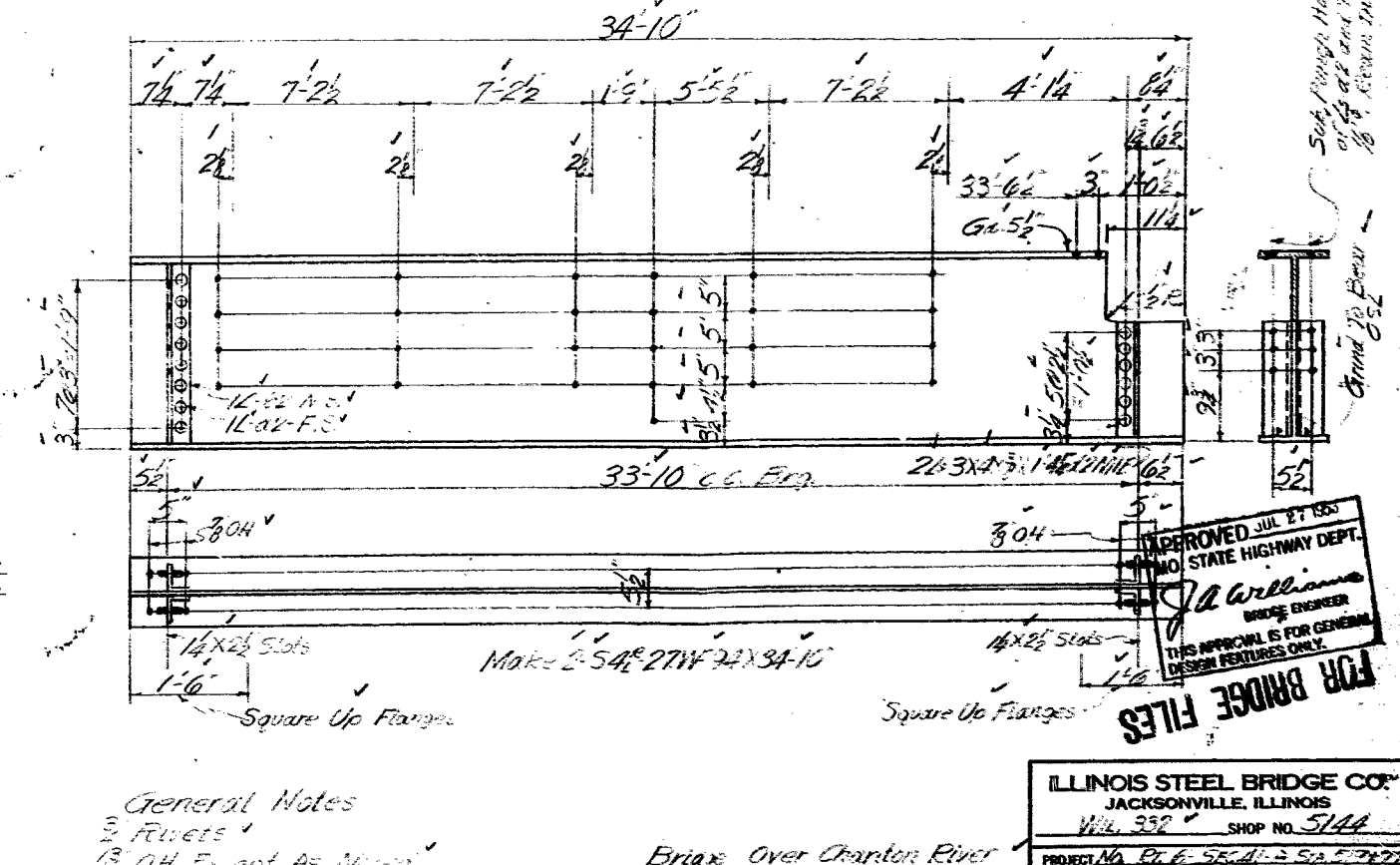
APPROVED JUL 27 1966  
MO. STATE HIGHWAY DEPT.  
*J. A. Williams*  
BRIDGE ENGINEER  
THIS APPROVAL IS FOR GENERAL  
DESIGN FEATURES ONLY.







Make 12-52-27WF102X34-10



MoK-254<sup>1</sup><sub>2</sub>-27W<sup>1</sup><sub>2</sub>X34-10<sup>1</sup>

Bridge Over Chanton River  
State Rd. Farm Moxinger N.E.  
Abt. 7 MI. NW of Kirksville

04

APPROVED JUL 27 1955  
NO. STATE HIGHWAY DEPT.  
J. A. Williams  
BRIDGE ENGINEER  
THIS APPROVAL IS FOR GENERAL  
DESIGN FEATURES ONLY.

146

FOR BRIDGE FILES

ILLINOIS STEEL BRIDGE CO.  
JACKSONVILLE, ILLINOIS  
W.L. 332 SHOP NO. 5144

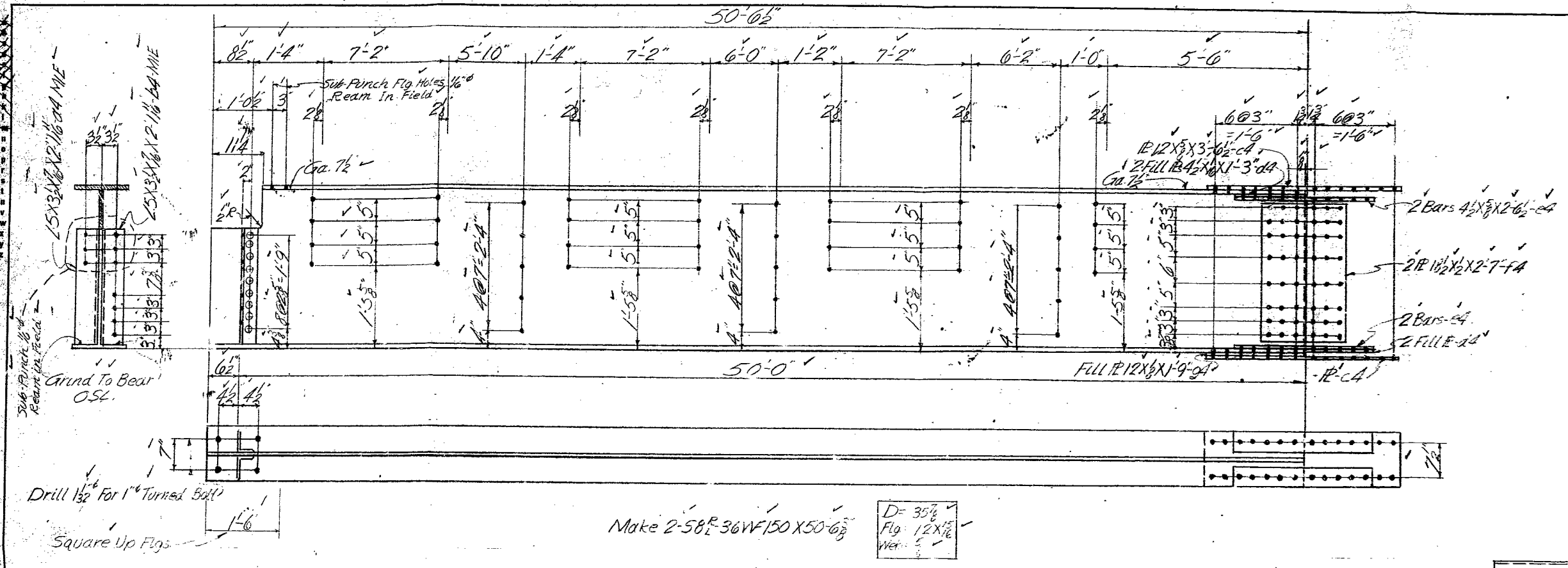
PROJECT NO. P.E. 55-41-2 S.D. 5747  
ATKINS CONSULT. MISSOURI

MADE BY 55-41-3  
CHK. BY 56-12-53

SHEET 2 OF 10

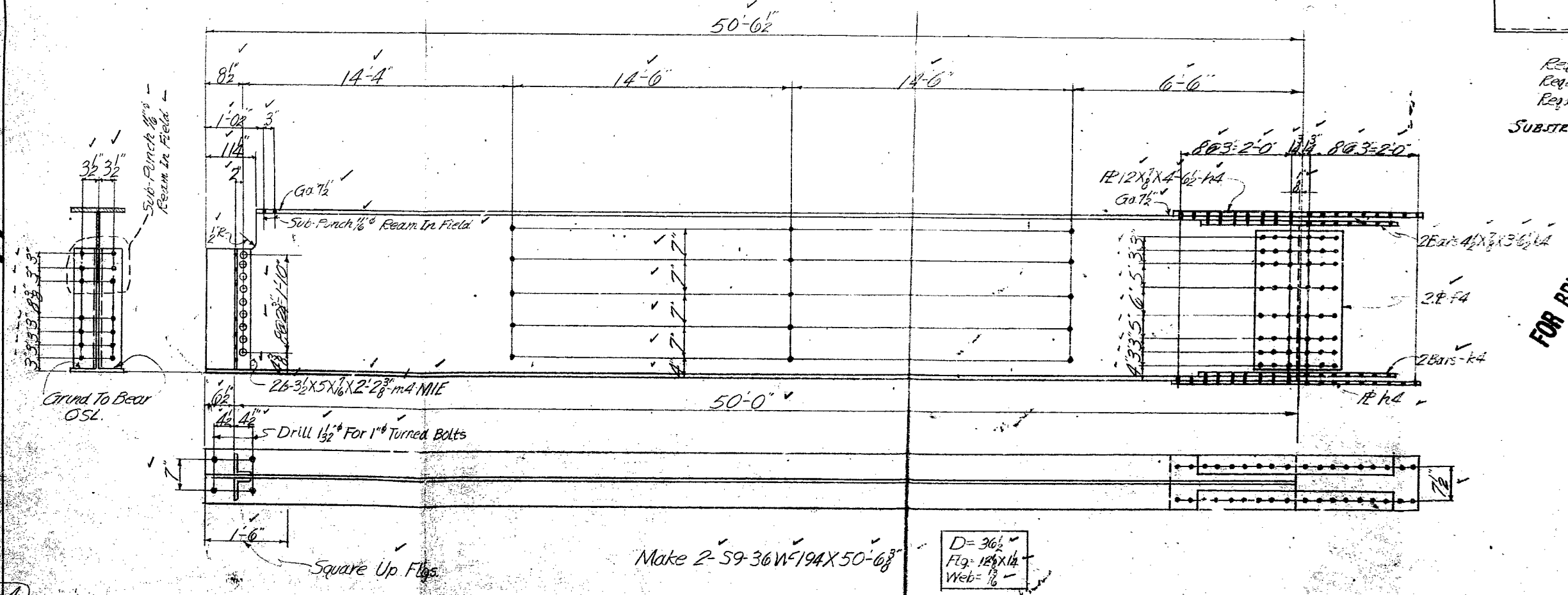
AS BUILT	FIELD	W.G.	INT.	CR.
AS BUILT	FIELD	W.G.	INT.	CR.





Make 2-58<sup>R</sup> 36WF150 X 50-6 3/8

D= 35 1/2"  
Flg. 12 X 1 1/2"  
Web 5"



Make 2-59 36WF194 X 50-6 3/8

D= 36 1/2"  
Flg. 12 1/2 X 1 1/2"  
Web 5"

Reqs - 2-9-115, 38-7 (Plain)  
Reqs - 2-1 do X 24-8 do  
Reqs - 12-1 do X 23-11 do

**SUBSTRUCTURE BRACING**  
Added 1/30/53.

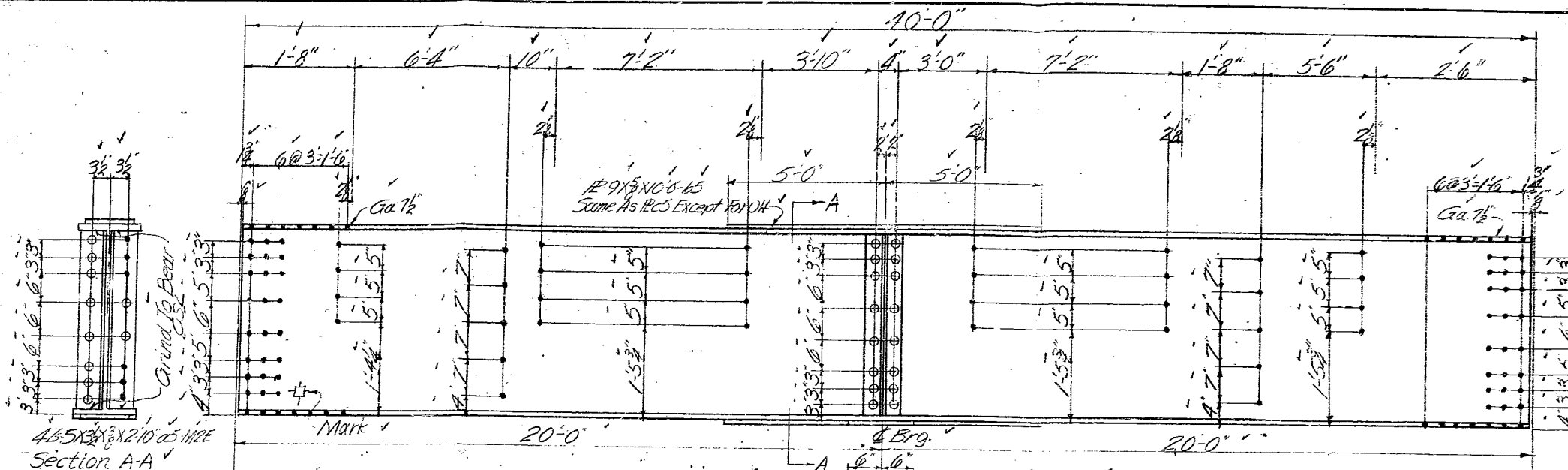
FOR BRIDGE FILES

APPROVED BY  
MO. STATE HIGHWAY DEPT.  
*J. Williams*  
BRIDGE ENGINEER  
THIS APP. WAS FOR GENERAL  
DESIGN FEATURES ONLY.

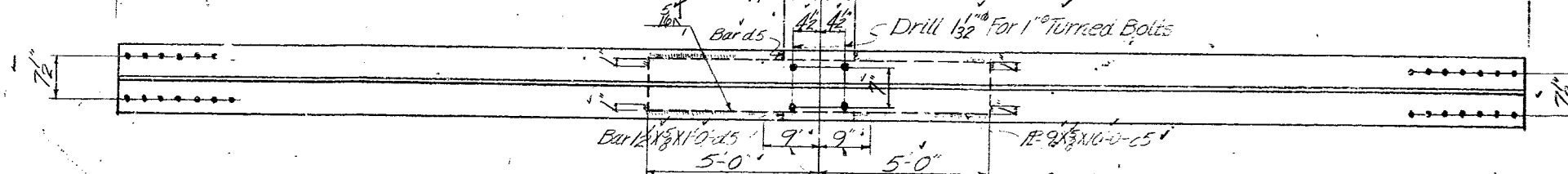
**General Notes**

- 3/8" Rivets
- 1/8" OH Except As Noted
- No Shop Paint
- Sub-punch splice holes 1/8" and ream to 1/8" with stringers assembled in their proper positions. Matchmark. Set splice plates back to clear ends of beams and bolt for shipment. Matchmark bottom splice plate with 1 line-top plates with 2 lines.

ILLINOIS STEEL BRIDGE CO. JACKSONVILLE, ILLINOIS	
WIL 332	SHOP NO. 5144
PROJECT No R-11A Sec 41-A Sta 374+77	
ADAIR COUNTY, MISSOURI	
MADE BY: G.S. 5/12/53	CHECKED BY: A.L. 12-53



Section A-A



Section B-B

Square Up Flgs.  
Make 4 #10P-36WF160X39-11 1/2

D=36  
Flg=12x11  
Web=16

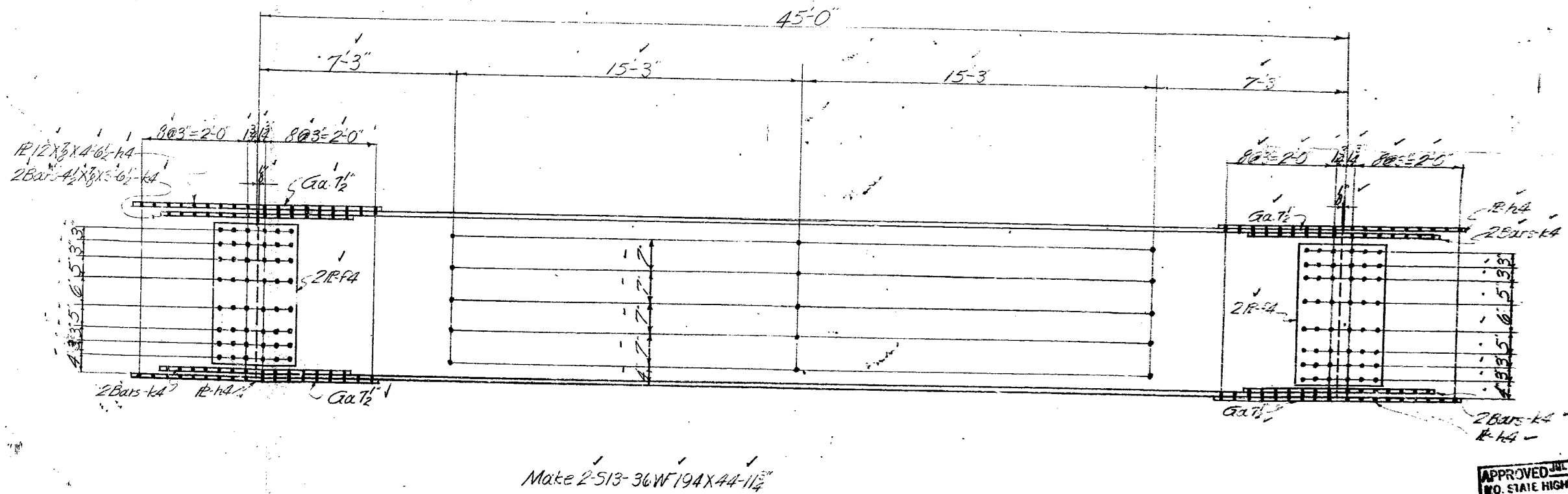
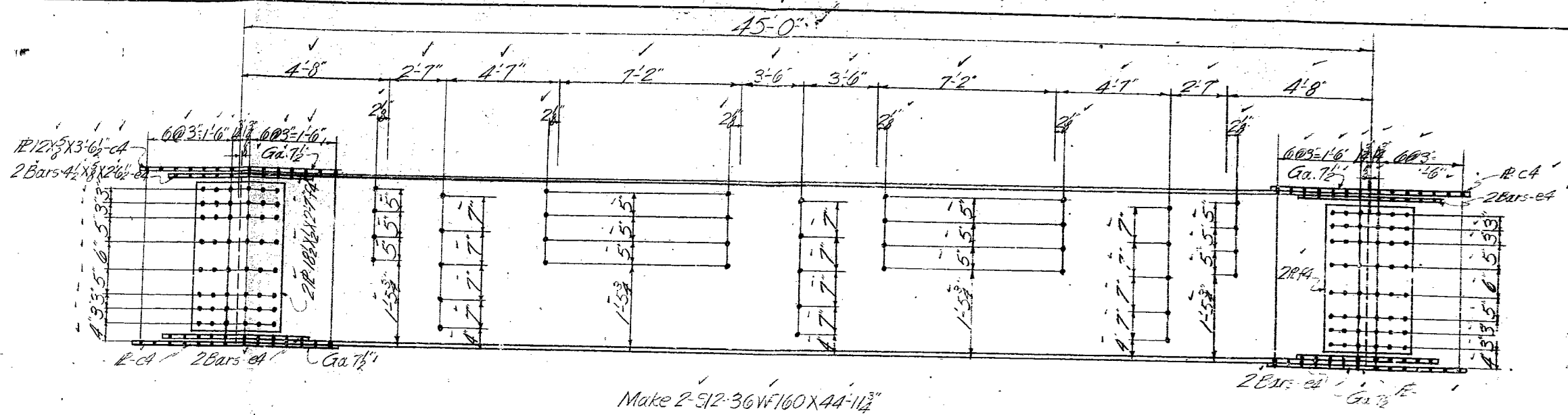
Fit-ting will be kept in place until the lower section steel has been applied to the webbing of the girder to top and bottom flg. of stringer.



FOR BRIDGE FILES

General Notes on Sheet 4  
3" Rivets  
1/8" OH Except As Noted  
No Shop Paint

ILLINOIS STEEL BRIDGE CO.	
JACKSONVILLE, ILLINOIS	
WIL 332	SHOP NO. 5144
PROJECT: PENN. G. SEC. 41.2 STA. 5917.7	
ALPHE COUNTY, MISSOURI	
MADE BY: 8/5/18/53	CHECKED BY: 8/6-18-53
SHEET OF 70	



APPROVED JUL 27 1953  
MO. STATE HIGHWAY DEPT.  
*J. A. Williams*  
BRIDGE ENGINEER  
THIS APPROVAL IS FOR GENERAL  
DESIGN FEATURES ONLY.

General Notes on Sheet 4  
1/8" OH Except As Noted  
No Shop Paint

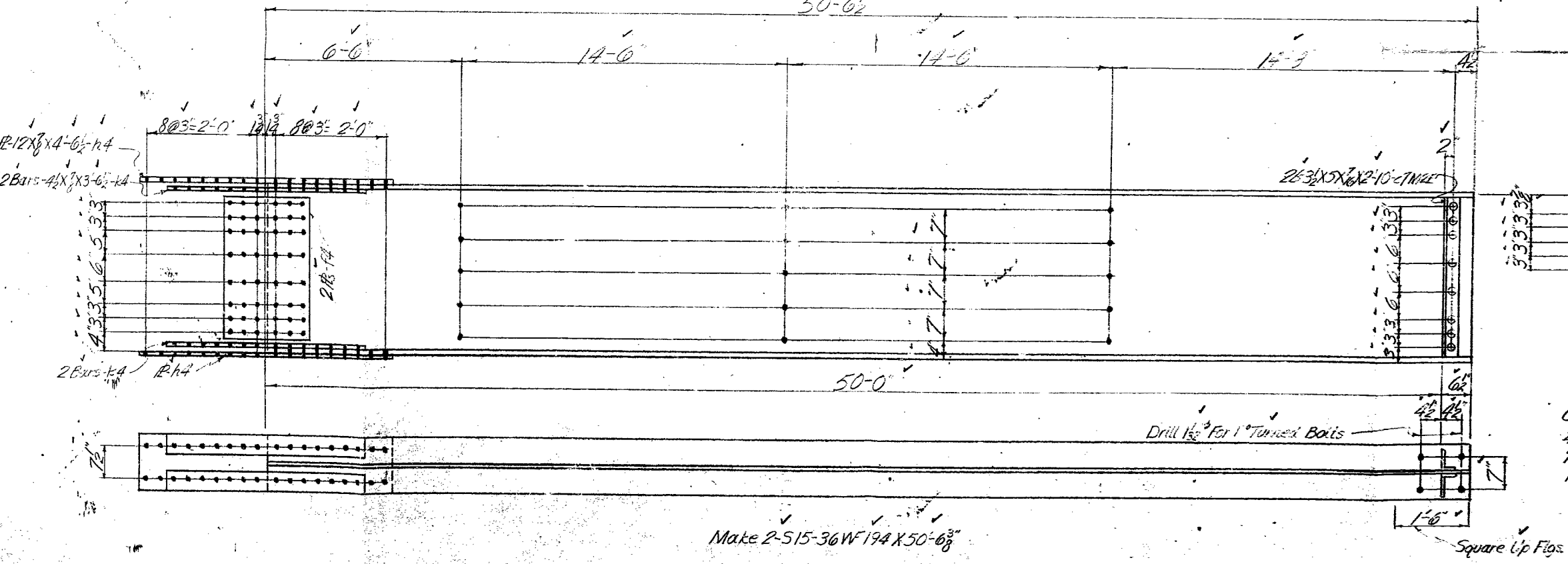
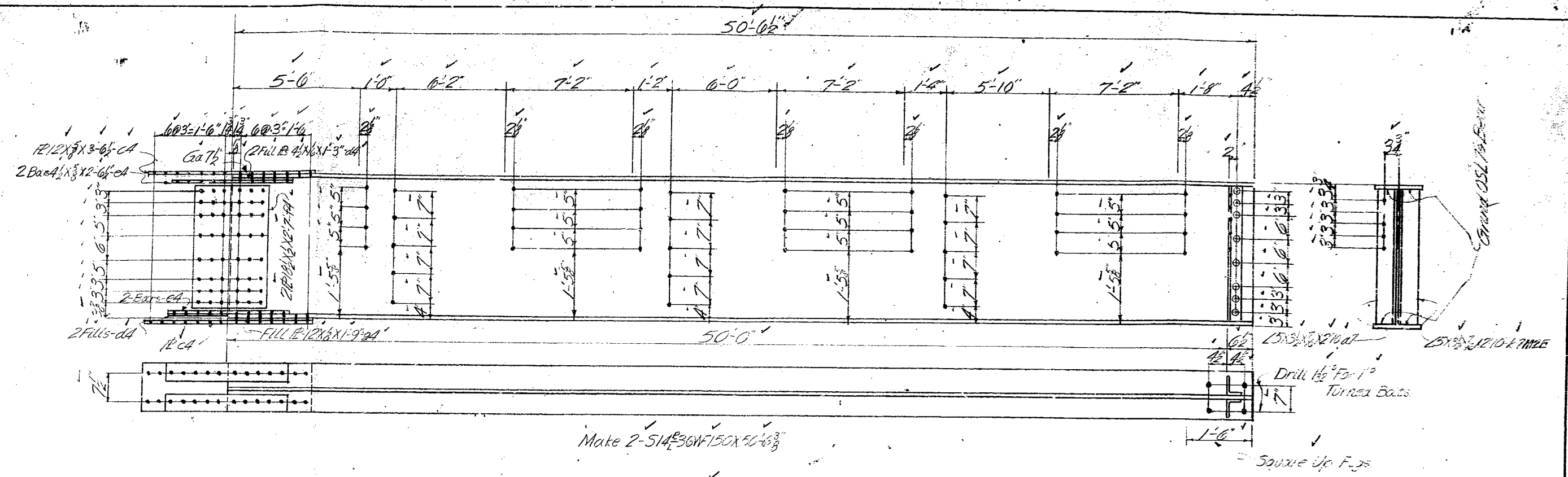
FOR BRIDGE FILES

ILLINOIS STEEL BRIDGE CO.  
JACKSONVILLE, ILLINOIS  
WIL. 332 SHOP NO. 5144  
PROJECT NO. R-1166 SR. 21457A-5917A  
ADAMS COUNTY MISSOURI  
MADE BY 6-7-1953  
CHK. BY 6-15-53  
SHEET 10

13

6

74

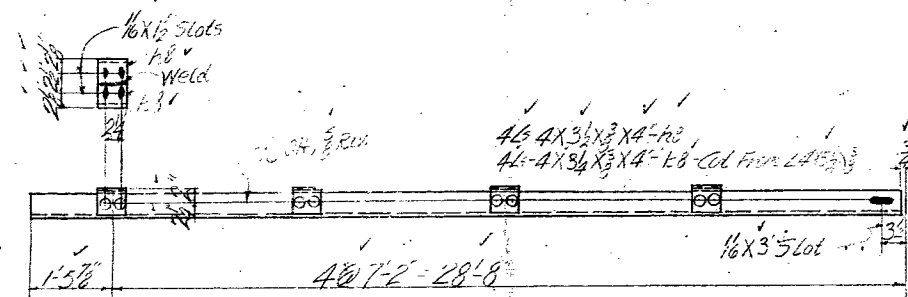


APPROVED BY EES  
MO. STATE HIGHWAY DEPT.  
*J.A. Williams*  
BRIDGE ENGINEER  
THIS APPROVAL IS FOR GENERAL  
DESIGN FEATURES ONLY.

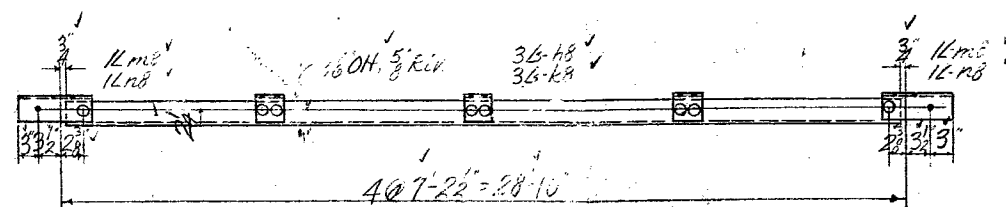
General Notes on Sheet 4  
3 Rivets  
18 OH Except As Noted  
No Shop Paint  
**FOR BRIDGE FILES**

ILLINOIS STEEL BRIDGE CO.  
JACKSONVILLE, ILLINOIS  
WIL 332 SHOP NO. 5144  
PROJECT No. R.T. & SEC. 4A STA 519+75  
APPLE CREEK MISSOURI  
MADE IN U.S.A.  
CNC BY 10-18-53  
SHEET OF 70

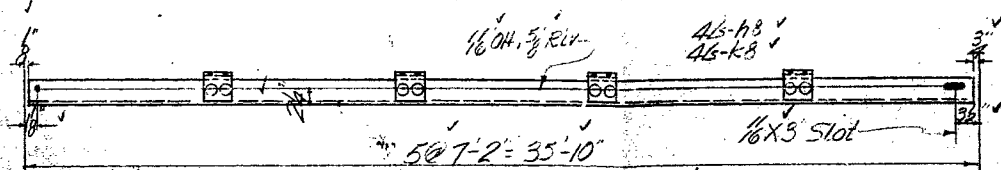
✓ 1  $24\frac{3}{4} \times 3\frac{1}{2} \times 5 \times 7 - 9\frac{5}{8} - a8$   
No. 39 D5  $24\frac{3}{4} \times 3\frac{1}{2} \times 5 \times 8 - 0\frac{1}{8} - b8$   
 $24\frac{3}{4} \times 4 \times 5 \times 2 - 6\frac{1}{2} - c8$



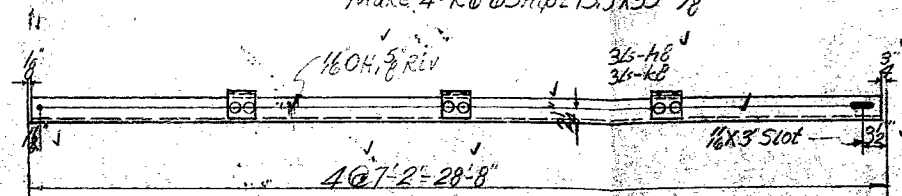
Mat = 8-R1-65hip [15.3X30-18"



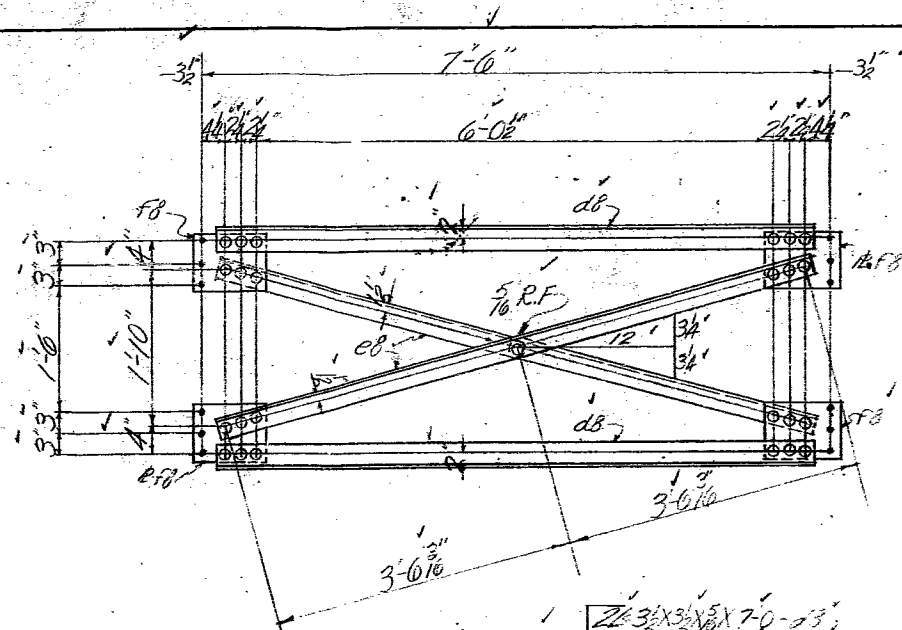
Make 8-E3-6 Ship [15.3 X 28'-8 1/2"]



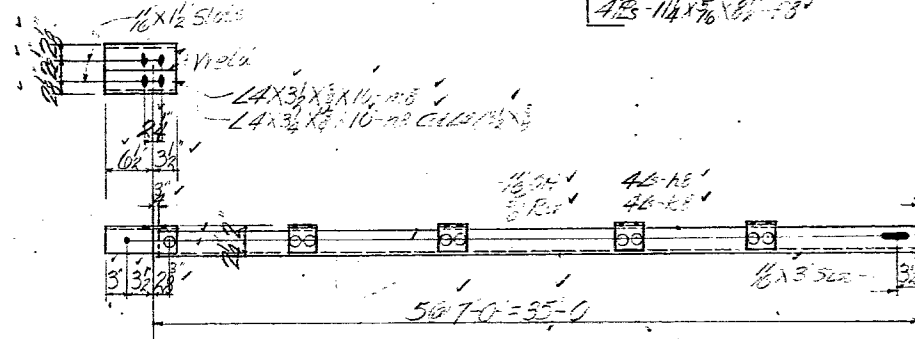
Make 4-R6-65hip [15.3X35'-9 1/2



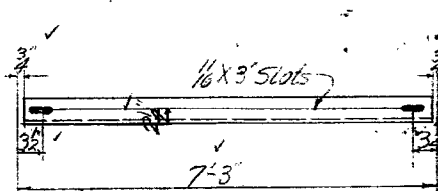
Make 4-R9-6 Ship L15.3X28-76



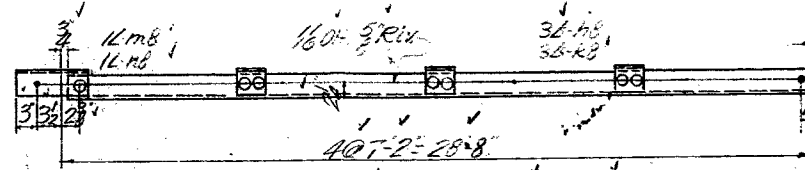
Make 6-F1.



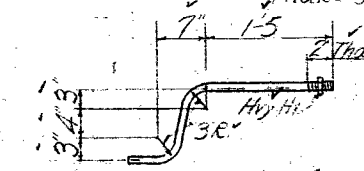
Matr = 16 RI-6 Ship DE 34-102



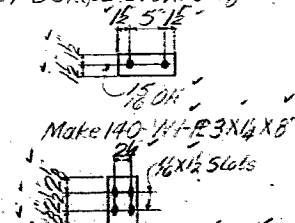
Make 8 R4-65hp [15.3x7-1/2"]



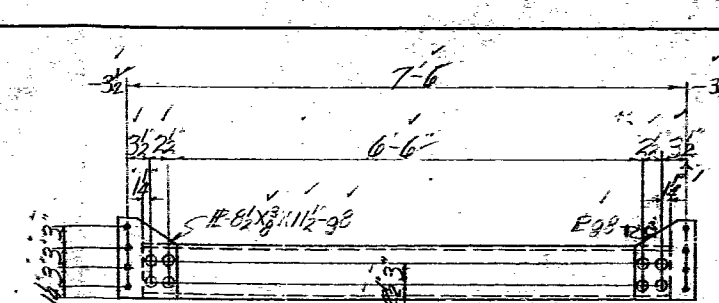
Make 8-R7-6 Ship 15.3 X 28-7/8



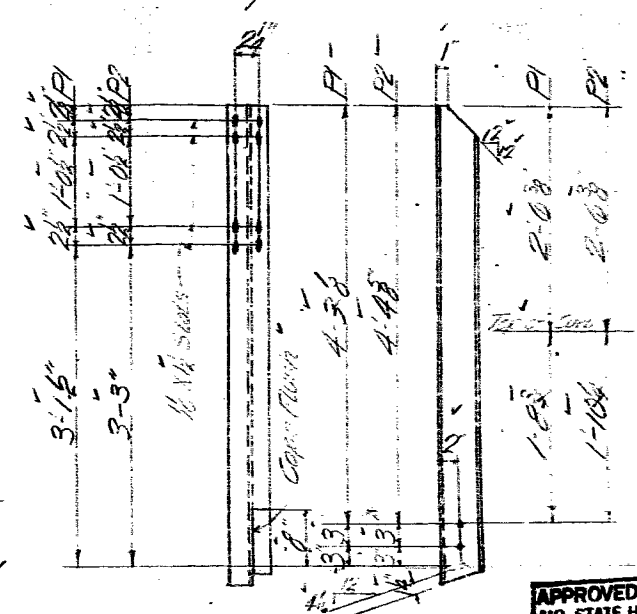
Make 280-ABI-37X3-9



Make 70-RS1-P4X4X62 Not Included In Pk 12  
Make 70-RS2-P4X4X62 do

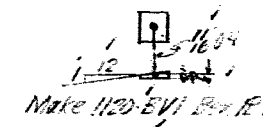


Make 3-D5-8 [11.5 x 7 1/2]

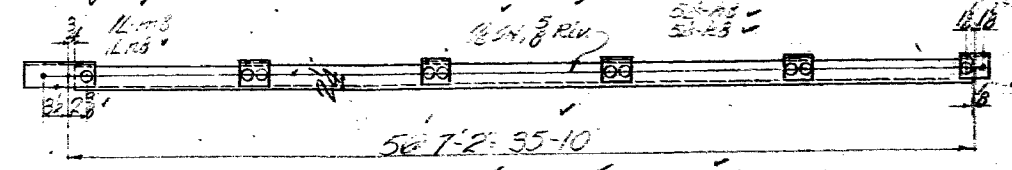


Notice 136, P.L. 41-73 (Emergency)  
 Notice 4-136, P.L. 41-73 (Emergency) X 503

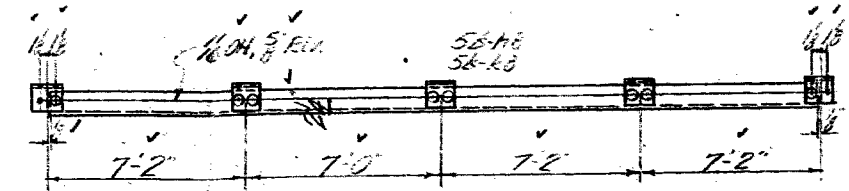
APPROVED. JUL 27 1958  
MO. STATE HIGHWAY DEPT.  
*J. A. Williams*  
BRIDGE ENGINEER  
THIS APPROVAL IS FOR GENERAL  
DESIGN FEATURES ONLY.



Make 1120 SVI B & R PA316



Make B-R5-65k, 0.15.3X35-98



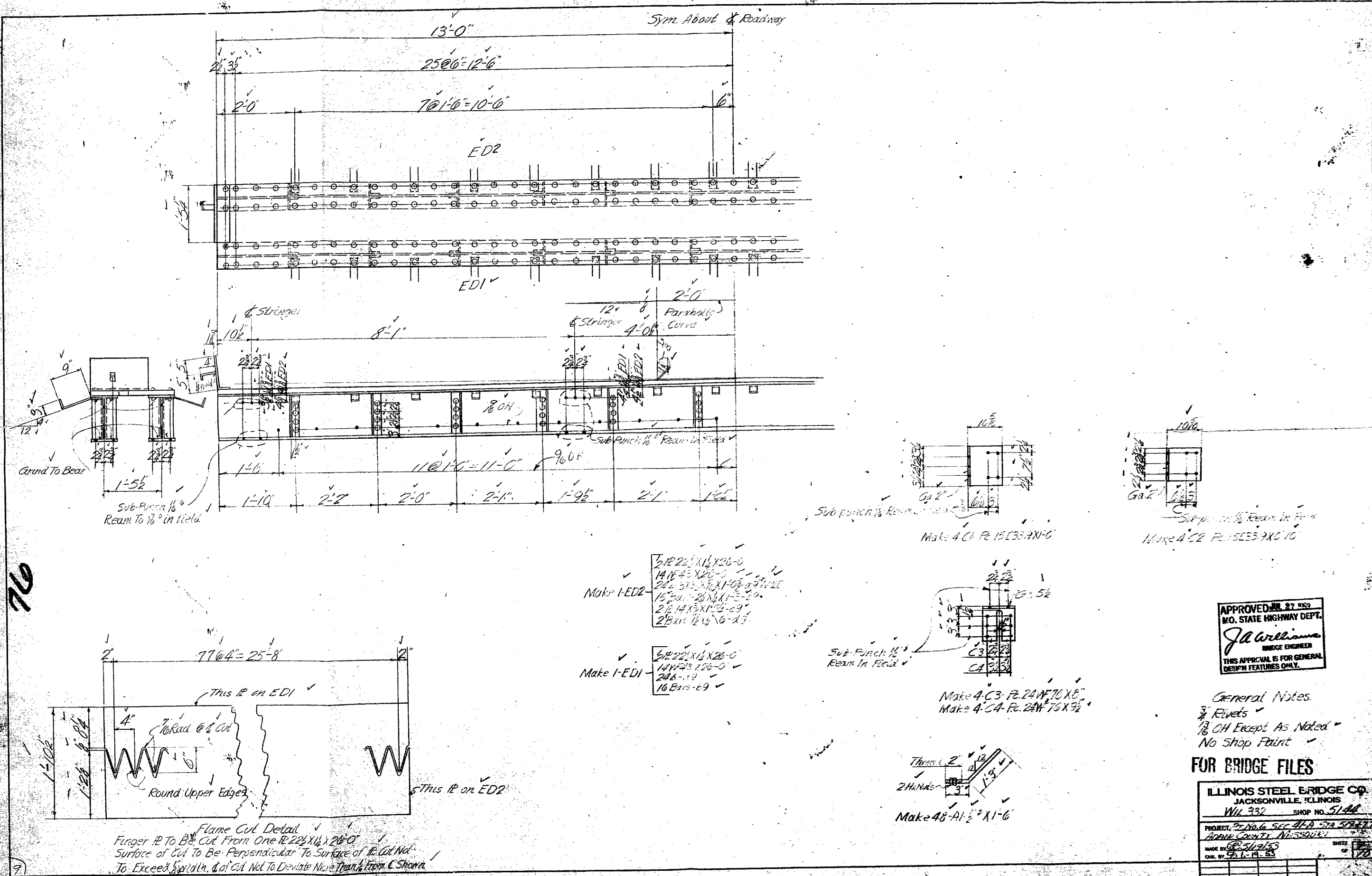
Make 4-RB-65 to L15.3X28-54

FOR BRIDGE FILES

General Note:  
 1/8" OH Except As Noted -  
 3/4" Rivets Except As Noted -  
 No Shop Paint ✓

**ILLINOIS STEEL BRIDGE CO.**  
JACKSONVILLE, ILLINOIS  
*WIL 332* SHOP NO. *5144*

PROJECT No. P.T.G. SEC. 28-0522-*5147*  
ADAMS COUNTY MISSOURI  
MADE BY *SF/SB/LS* CHECKED *[Signature]*  
CER. BY \_\_\_\_\_



ILLINOIS STEEL BRIDGE CO.  
JACKSONVILLE, ILL.  
WIA 362 SHOP NO. 15144  
1000 W. 1st St. N. Jackson, Ill.  
MADE IN U.S.A.